

mStrawberry Mouse Polyclonal Antibody

Catalog No: #38082



Package Size: #38082-1 50ul #38082-2 100ul

Orders: order@signalwayantibody.comSupport: tech@signalwayantibody.com

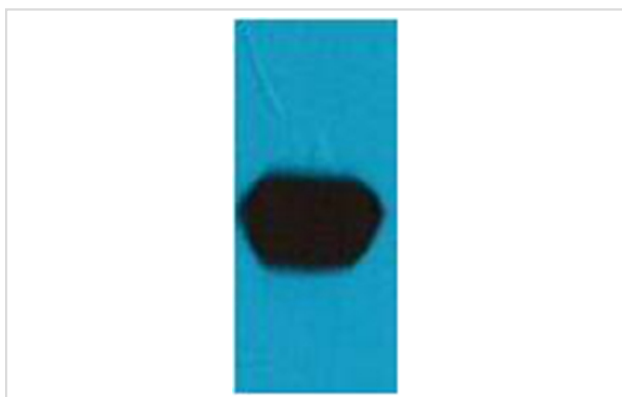
Description

Product Name	mStrawberry Mouse Polyclonal Antibody
Host Species	Mouse
Clonality	Polyclonal
Purification	Affinity purification using immunogen.
Applications	WB IHC IF IP
Specificity	The mStrawberry Mouse Polyclonal Antibody detects mStrawberry & mStrawberry Tag protein.
Target Name	mStrawberry
Other Names	mStrawberry
Concentration	1.0mg/ml
Formulation	Mouse IgG in phosphate buffered saline (without Mg ²⁺ and Ca ²⁺), pH 7.4, 150mM NaCl, 0.02% sodium azide and 50% glycerol.
Storage	Store at -20°C

Application Details

Western blotting: 1:2000~1:5000

Images



Western blot analysis of mStrawberry recombinant protein, using #38082 diluted at 1:5,000.

Background

mStrawberry is a bright, monomeric red fluorescent protein which was developed in Dr. Roger Tsien's lab by directed mutagenesis of mRFP.

Note: This product is for in vitro research use only and is not intended for use in humans or animals.