

# $\beta$ I tubulin Mouse Monoclonal Antibody

Catalog No: #37983



Package Size: #37983-1 50ul #37983-2 100ul

Orders: [order@signalwayantibody.com](mailto:order@signalwayantibody.com)Support: [tech@signalwayantibody.com](mailto:tech@signalwayantibody.com)

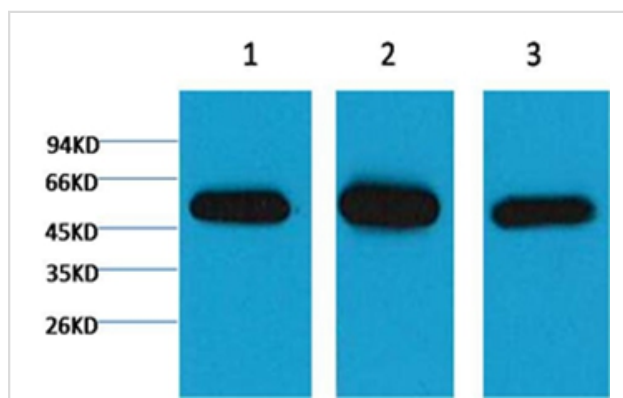
## Description

Product Name	$\beta$ I tubulin Mouse Monoclonal Antibody
Host Species	Mouse
Clonality	Monoclonal
Purification	Affinity purification using immunogen.
Applications	WB
Species Reactivity	Hu Rt Ms
Specificity	The $\beta$ I tubulin antibody can recognize endogenous $\beta$ I tubulin proteins.
Target Name	$\beta$ I tubulin
SDS-PAGE MW	55kd
Concentration	1.0mg/ml
Formulation	Mouse IgG1 in phosphate buffered saline (without Mg <sup>2+</sup> and Ca <sup>2+</sup> ), pH 7.4, 150mM NaCl, 0.02% sodium azide and 50% glycerol.
Storage	Store at -20°C

## Application Details

Western blotting: 1:5000~1:10000

## Images



Western blot analysis of 1) HeLa, 2) Mouse Brain Tissue, 3) Rat Brain Tissue, using #37983 diluted at 1:5,000.

## Background

Tubulin is one of several members of a small family of globular proteins. The tubulin superfamily includes five distinct families, the alpha-, beta-, gamma-, delta-, and epsilon-tubulins. The most common members of the tubulin family are  $\alpha$ -tubulin and  $\beta$ -tubulin, the proteins that make up microtubules. Each has a molecular weight of approximately 55 KD. Microtubules are assembled from dimers of  $\alpha$ - and  $\beta$ -tubulin.

---

Note: This product is for in vitro research use only and is not intended for use in humans or animals.