

GAPDH Rabbit Polyclonal Antibody(Zebrafish Specific)

Catalog No: #38057

Package Size: #38057-1 50ul #38057-2 100ul

Orders: order@signalwayantibody.comSupport: tech@signalwayantibody.com

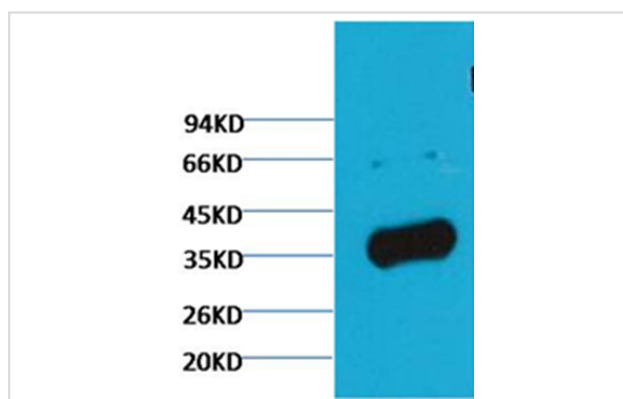
Description

Product Name	GAPDH Rabbit Polyclonal Antibody(Zebrafish Specific)
Host Species	Rabbit
Clonality	Polyclonal
Purification	Affinity purification using immunogen.
Applications	WB IHC IF
Species Reactivity	Zebrafish
Specificity	The GAPDH antibody can detects Zebrafish endogenous GAPDH protein.
Target Name	GAPDH(Zebrafish Specific)
Other Names	G3PD; GAPD; MGC88685
Accession No.	Swiss-Prot#:P04406
SDS-PAGE MW	37kd
Concentration	1.0mg/ml
Formulation	IgG in phosphate buffered saline (without Mg ²⁺ and Ca ²⁺), pH 7.4, 150mM NaCl, 0.02% sodium azide and 50% glycerol.
Storage	Store at -20°C

Application Details

Western blotting: 1:5000~1:10000

Images



Western blot analysis of Zebrafish skeletal muscle, using #38057 diluted at 1:5,000.

Background

Glyceraldehyde 3 phosphate dehydrogenase (GAPDH) is well known as one of the key enzymes involved in glycolysis. GAPDH is constitutively expressed in almost all tissues at high levels, therefore antibodies against GAPDH are useful as loading controls for Western Blotting. Some physiological factors, such as hypoxia and diabetes, increase GAPDH expression in certain cell types.

Note: This product is for in vitro research use only and is not intended for use in humans or animals.