

BMP2 antibody

Catalog No: #38107



Package Size: #38107-1 50ul #38107-2 100ul

Orders: order@signalwayantibody.com
Support: tech@signalwayantibody.com

Description

Product Name	BMP2 antibody
Host Species	Rabbit
Clonality	Polyclonal
Isotype	IgG
Purification	Affinity purification
Applications	WB,IHC,IF
Species Reactivity	Human,Mouse,Rat
Specificity	The antibody detects endogenous level of total BMP2 protein.
Immunogen Type	Recombinant Protein
Immunogen Description	Recombinant fusion protein of human BMP2 (NP_001191.1).
Target Name	BMP2
Other Names	BDA2;BMP2A;BMP2
Accession No.	Uniprot:P12643GeneID:650
SDS-PAGE MW	15KDa/26KDa/45KDa
Concentration	1.0mg/ml
Formulation	PBS with 0.02% sodium azide,50% glycerol,pH7.3.
Storage	Store at -20°C. Avoid freeze / thaw cycles.

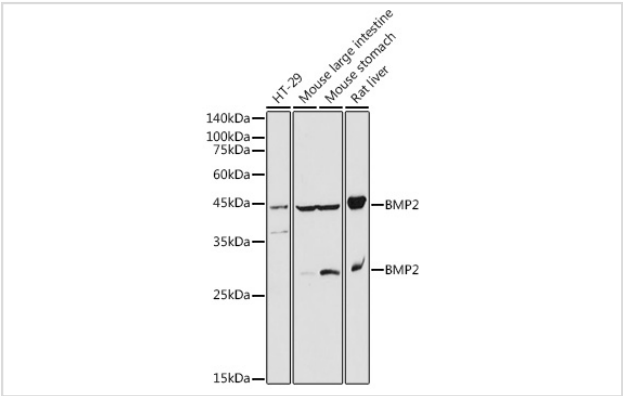
Application Details

WB 1:500 - 1:2000

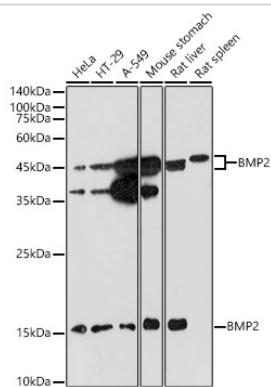
IHC 1:50 - 1:100

IF 1:50 - 1:200

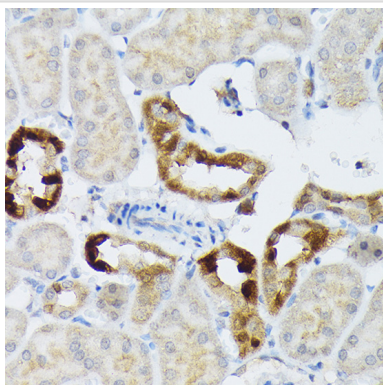
Images



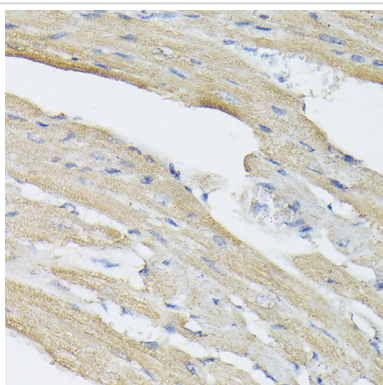
Western blot analysis of extracts of various cell lines, using BMP2 antibody.



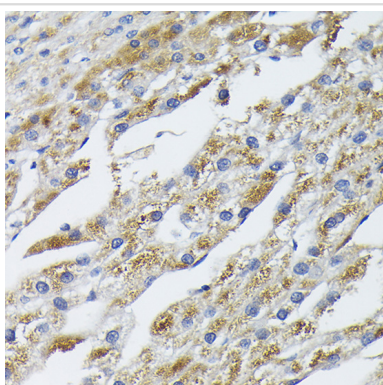
Western blot analysis of extracts of various cell lines, using BMP2 antibody.



Immunohistochemistry of paraffin-embedded mouse kidney using BMP2 Rabbit pAb.



Immunohistochemistry of paraffin-embedded rat heart using BMP2 Rabbit pAb.



Immunohistochemistry of paraffin-embedded human liver cancer using BMP2 Rabbit pAb.

Background

This gene encodes a secreted ligand of the TGF-beta (transforming growth factor-beta) superfamily of proteins. Ligands of this family bind various TGF-beta receptors leading to recruitment and activation of SMAD family transcription factors that regulate gene expression. The encoded preproprotein is proteolytically processed to generate each subunit of the disulfide-linked homodimer, which plays a role in bone and cartilage development. Duplication of a regulatory region downstream of this gene causes a form of brachydactyly characterized by a malformed index finger and second toe in human patients.

Published Papers

el at., Asperosaponin VI, a saponin component from *Dipsacus asper* wall, induces osteoblast differentiation through bone morphogenetic protein-2/p38 and extracellular signal-regulated kinase 1/2 pathway. In *Phytother Res* on 2011 Nov by Niu Y, Li Y, et al.. PMID: 21452371, , (2011)
[PMID:21452371](#)

Note: This product is for in vitro research use only and is not intended for use in humans or animals.