

## IRF4 antibody

Catalog No: #38169

Package Size: #38169-1 50ul #38169-2 100ul

Orders: [order@signalwayantibody.com](mailto:order@signalwayantibody.com)Support: [tech@signalwayantibody.com](mailto:tech@signalwayantibody.com)

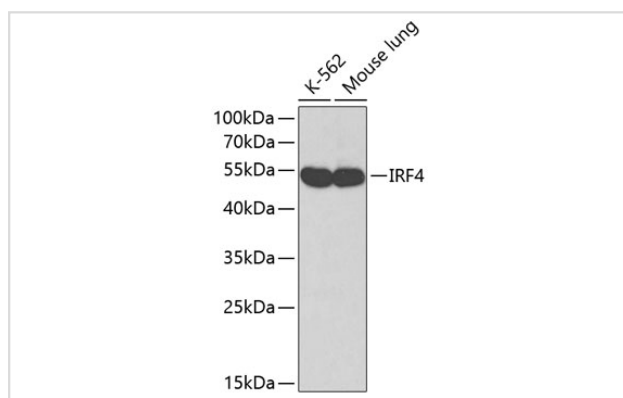
## Description

Product Name	IRF4 antibody
Host Species	Rabbit
Clonality	Polyclonal
Isotype	IgG
Purification	Affinity purification
Applications	WB
Species Reactivity	Human,Mouse
Specificity	The antibody detects endogenous level of total IRF4 protein.
Immunogen Type	Recombinant Protein
Immunogen Description	Recombinant fusion protein of human IRF4 (NP_002451.2).
Target Name	IRF4
Other Names	IRF4;LSIRF;MUM1;NF-EM5;SHEP8;IRF-4
Accession No.	Uniprot:Q15306GeneID:3662
SDS-PAGE MW	52kDa
Concentration	1.0mg/ml
Formulation	PBS with 0.02% sodium azide,50% glycerol,pH7.3.
Storage	Store at -20°C. Avoid freeze / thaw cycles.

## Application Details

WB 1:500 - 1:2000

## Images



Western blot analysis of extracts of various cell lines, using IRF4 antibody.

## Background

The protein encoded by this gene belongs to the IRF (interferon regulatory factor) family of transcription factors, characterized by an unique tryptophan pentad repeat DNA-binding domain. The IRFs are important in the regulation of interferons in response to infection by virus, and in the regulation of

interferon-inducible genes. This family member is lymphocyte specific and negatively regulates Toll-like-receptor (TLR) signaling that is central to the activation of innate and adaptive immune systems. A chromosomal translocation involving this gene and the IgH locus, t(6;14)(p25;q32), may be a cause of multiple myeloma. Alternatively spliced transcript variants have been found for this gene.

---

Note: This product is for in vitro research use only and is not intended for use in humans or animals.