

VEGFR2(Phospho-Tyr1214) Antibody

Catalog No: #11085



Package Size: #11085-1 50ul #11085-2 100ul

Orders: order@signalwayantibody.comSupport: tech@signalwayantibody.com

Description

Product Name	VEGFR2(Phospho-Tyr1214) Antibody
Host Species	Rabbit
Clonality	Polyclonal
Purification	Antibodies were produced by immunizing rabbits with synthetic phosphopeptide and KLH conjugates. Antibodies were purified by affinity-chromatography using epitope-specific phosphopeptide. Non-phospho specific antibodies were removed by chromatography using non-phosphopeptide.
Applications	WB IHC IF
Species Reactivity	Hu Ms Rt
Specificity	The antibody detects endogenous level of VEGFR2 only when phosphorylated at tyrosine 1214.
Immunogen Type	Peptide-KLH
Immunogen Description	Peptide sequence around phosphorylation site of tyrosine 1214 (F-H-Y(p)-D-N) derived from Human VEGFR2.
Target Name	VEGFR2
Modification	Phospho
Other Names	FLK1; KDR; VEGFR2; VGR2; kinase insert domain receptor
Accession No.	Swiss-Prot: P35968NCBI Protein: NP_002244.1
Concentration	1.0mg/ml
Formulation	Supplied at 1.0mg/mL in phosphate buffered saline (without Mg ²⁺ and Ca ²⁺), pH 7.4, 150mM NaCl, 0.02% sodium azide and 50% glycerol.
Storage	Store at -20°C for long term preservation (recommended). Store at 4°C for short term use.

Application Details

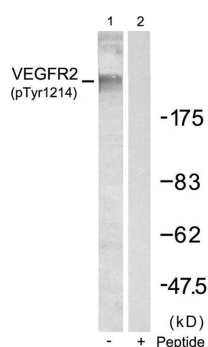
Predicted MW: 230kd

Western blotting: 1:500~1:1000

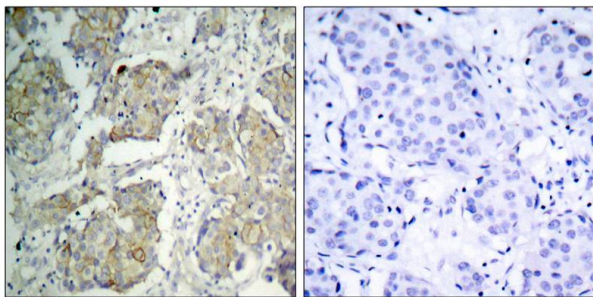
Immunohistochemistry: 1:50~1:100

Immunofluorescence: 1:100~1:200

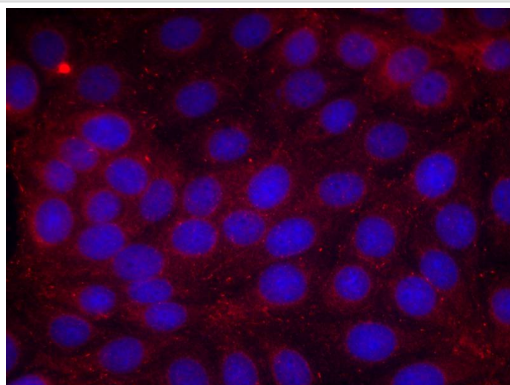
Images



Western blot analysis of extracts from SKOV3 cells using VEGFR2(Phospho-Tyr1214) Antibody #11085 (Lane 1) and the same antibody preincubated with blocking peptide (Lane 2).



Immunohistochemical analysis of paraffin-embedded human breast carcinoma tissue using VEGFR2(Phospho-Tyr1214) Antibody #11085(left) or the same antibody preincubated with blocking peptide(right).



Immunofluorescence staining of methanol-fixed MCF cells using VEGFR2(Phospho-Tyr1214) Antibody #11085.

Background

Receptor for VEGF or VEGFC. Has a tyrosine-protein kinase activity. The VEGF-kinase ligand/receptor signaling system plays a key role in vascular development and regulation of vascular permeability. In case of HIV-1 infection, the interaction with extracellular viral Tat protein seems to enhance angiogenesis in Kaposi's sarcoma lesions

Lamallice L, et al. (2004). *Oncogene*.23(2): 434-445.

Takahashi T, et al. (2001). *EMBO J* .20(11): 2768-2778.

Published Papers

el at., Impaired tumor angiogenesis and VEGF-induced pathway in endothelial CD146 knockout mice. In *Protein Cell* on 2014 Jun by Qiqun Zeng , Zhenzhen Wu et al..PMID: 24756564, , (2014)

[PMID:24756564](#)

el at., CD146 is a coreceptor for VEGFR-2 in tumor angiogenesis. In *Blood* on 2012 Sep 13 by Tianxia Jiang, Jie Zhuang, et al..PMID: 22718841, , (2012)

[PMID:22718841](#)

Note: This product is for in vitro research use only and is not intended for use in humans or animals.