

Wnt5a antibody

Catalog No: #38376

Package Size: #38376-1 50ul #38376-2 100ul

Orders: order@signalwayantibody.comSupport: tech@signalwayantibody.com

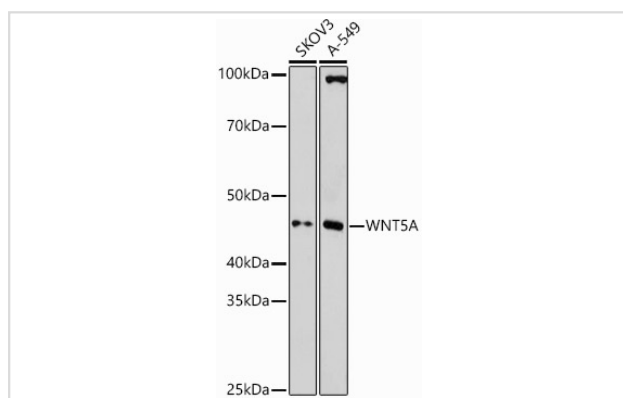
Description

Product Name	Wnt5a antibody
Host Species	Rabbit
Clonality	Polyclonal
Isotype	IgG
Purification	Affinity purification
Applications	WB
Species Reactivity	Human,Mouse,Rat
Specificity	The antibody detects endogenous level of total Wnt5a protein.
Immunogen Type	Recombinant Protein
Immunogen Description	Recombinant fusion protein of human WNT5A (NP_003383.2).
Target Name	Wnt5a
Other Names	hWNT5A;Wnt5a;WNT5A
Accession No.	Uniprot:P41221GeneID:7474
SDS-PAGE MW	45KDa
Concentration	1.0mg/ml
Formulation	PBS with 0.02% sodium azide,50% glycerol,pH7.3.
Storage	Store at -20°C. Avoid freeze / thaw cycles.

Application Details

WB 1:500 - 1:2000

Images



Western blot analysis of extracts of various cell lines, using WNT5A antibody.

Background

The WNT gene family consists of structurally related genes which encode secreted signaling proteins. These proteins have been implicated in oncogenesis and in several developmental processes, including regulation of cell fate and patterning during embryogenesis. This gene encodes a

member of the WNT family that signals through both the canonical and non-canonical WNT pathways. This protein is a ligand for the seven transmembrane receptor frizzled-5 and the tyrosine kinase orphan receptor 2. This protein plays an essential role in regulating developmental pathways during embryogenesis. This protein may also play a role in oncogenesis. Mutations in this gene are the cause of autosomal dominant Robinow syndrome. Alternate splicing results in multiple transcript variants.

Published Papers

et al., Yiguanjian decoction inhibits macrophage M1 polarization and attenuates hepatic fibrosis induced by CCl4/2-AAF. In Pharm Biol on 2021 Dec
by Ying Xu, Wen Xu,

et al..PMID:34425061, , (2021)

[PMID:34425061](#)

Note: This product is for in vitro research use only and is not intended for use in humans or animals.