

IRF2 antibody

Catalog No: #38426

Package Size: #38426-1 50ul #38426-2 100ul

Orders: order@signalwayantibody.comSupport: tech@signalwayantibody.com

Description

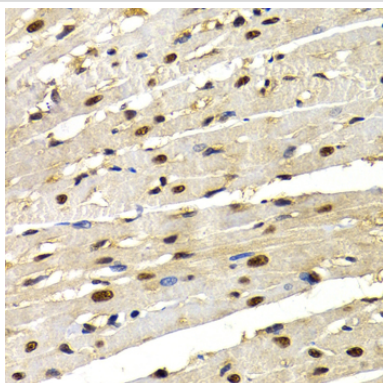
Product Name	IRF2 antibody
Host Species	Rabbit
Clonality	Polyclonal
Purification	Antibodies were purified by affinity purification using immunogen.
Applications	WB,IHC,IF
Species Reactivity	Human,Mouse,Rat
Specificity	The antibody detects endogenous level of total IRF2 protein.
Immunogen Type	Recombinant Protein
Immunogen Description	Recombinant protein of human IRF2.
Target Name	IRF2
Other Names	IRF-2;
Accession No.	Swiss-Prot#: P14316NCBI Gene ID: 3660
SDS-PAGE MW	39kd
Concentration	1.0mg/ml
Formulation	Supplied at 1.0mg/mL in phosphate buffered saline (without Mg ²⁺ and Ca ²⁺), pH 7.4, 150mM NaCl, 0.02% sodium azide and 50% glycerol.
Storage	Store at -20°C

Application Details

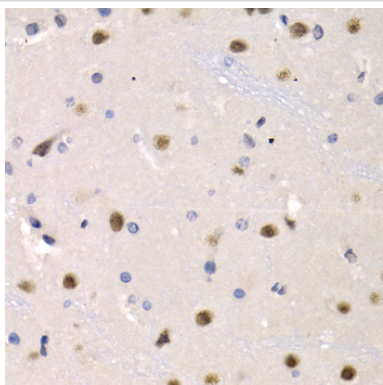
Western blotting: □1:500 - 1:2000

Immunofluorescence: □1:50 - 1:100

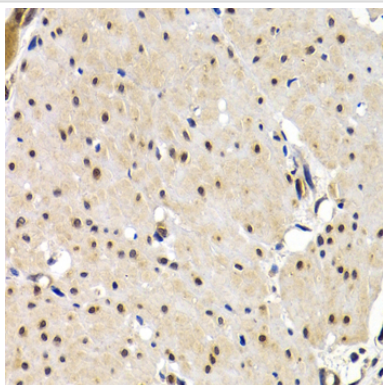
Images



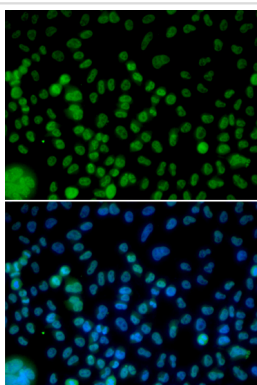
Immunohistochemistry of paraffin-embedded rat heart using IRF2 antibody at dilution of 1:200 (40x lens).



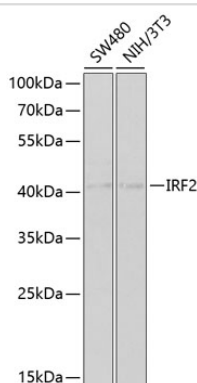
Immunohistochemistry of paraffin-embedded rat brain using IRF2 antibody at dilution of 1:200 (40x lens).



Immunohistochemistry of paraffin-embedded human gastric cancer using IRF2 antibody at dilution of 1:200 (40x lens).



Immunofluorescence analysis of HeLa cells using IRF2 antibody. Blue: DAPI for nuclear staining.



Western blot analysis of extracts of various cell lines, using IRF2 antibody at 1:1000 dilution.

Background

IRF2 encodes interferon regulatory factor 2, a member of the interferon regulatory transcription factor (IRF) family. IRF2 competitively inhibits the IRF1-mediated transcriptional activation of interferons alpha and beta, and presumably other genes that employ IRF1 for transcription activation. However, IRF2 also functions as a transcriptional activator of histone H4.

Note: This product is for in vitro research use only and is not intended for use in humans or animals.