

KRT4 antibody

Catalog No: #38434

Package Size: #38434-1 50ul #38434-2 100ul

Orders: order@signalwayantibody.comSupport: tech@signalwayantibody.com

Description

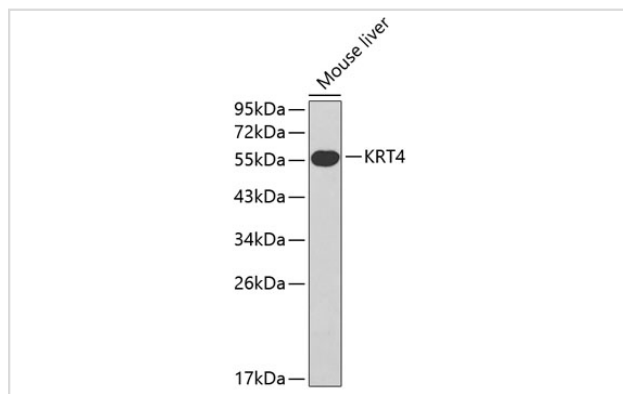
Product Name	KRT4 antibody
Host Species	Rabbit
Clonality	Polyclonal
Purification	Antibodies were purified by affinity purification using immunogen.
Applications	WB
Species Reactivity	Human,Mouse,Rat
Specificity	The antibody detects endogenous level of total KRT4 protein.
Immunogen Type	Recombinant Protein
Immunogen Description	Recombinant protein of human KRT4.
Target Name	KRT4
Other Names	K4; CK4; CK-4; CYK4;
Accession No.	Swiss-Prot#: P19013NCBI Gene ID: 3851
SDS-PAGE MW	57kd
Concentration	1.0mg/ml
Formulation	Supplied at 1.0mg/mL in phosphate buffered saline (without Mg ²⁺ and Ca ²⁺), pH 7.4, 150mM NaCl, 0.02% sodium azide and 50% glycerol.
Storage	Store at -20°C

Application Details

Western blotting: □1:500 - 1:2000

Immunohistochemistry: □1:50 - 1:200

Images



Western blot analysis of extracts of mouse liver, using KRT4 antibody.

Background

The protein encoded by this gene is a member of the keratin gene family. The type II cytokeratins consist of basic or neutral proteins which are

arranged in pairs of heterotypic keratin chains coexpressed during differentiation of simple and stratified epithelial tissues. This type II cytokeratin is specifically expressed in differentiated layers of the mucosal and esophageal epithelia with family member KRT13. Mutations in these genes have been associated with White Sponge Nevus, characterized by oral, esophageal, and anal leukoplakia. The type II cytokeratins are clustered in a region of chromosome 12q12-q13. [provided by RefSeq, Jul 2008]

Note: This product is for in vitro research use only and is not intended for use in humans or animals.