

KLF5 antibody

Catalog No: #38526



Package Size: #38526-1 50ul #38526-2 100ul

Orders: order@signalwayantibody.com
Support: tech@signalwayantibody.com

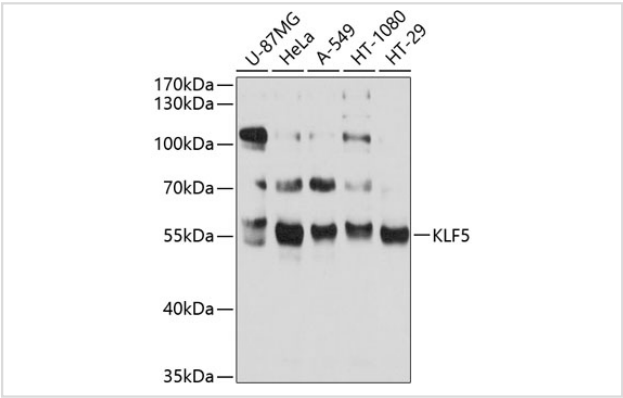
Description

Product Name	KLF5 antibody
Host Species	Rabbit
Clonality	Polyclonal
Isotype	IgG
Purification	Affinity purification
Applications	WB,IHC
Species Reactivity	Human,Mouse
Specificity	The antibody detects endogenous level of total KLF5 protein.
Immunogen Type	Peptide
Immunogen Description	Recombinant fusion protein of human KLF5 (NP_001721.2).
Target Name	KLF5
Other Names	KLF5;BTEB2;CKLF;IKLF
Accession No.	Uniprot:Q13887GeneID:688
SDS-PAGE MW	55kDa
Concentration	1.0mg/ml
Formulation	PBS with 0.02% sodium azide,50% glycerol,pH7.3.
Storage	Store at -20°C. Avoid freeze / thaw cycles.

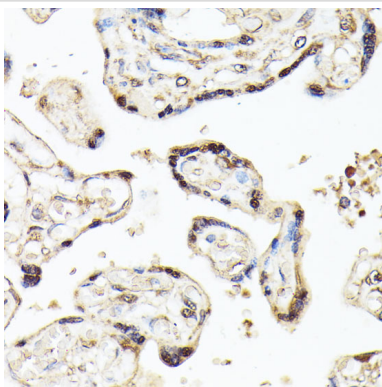
Application Details

WB 1:200 - 1:1000IHC 1:50 - 1:200

Images



Western blot analysis of extracts of various cell lines, using KLF5 antibody.



Immunohistochemistry of paraffin-embedded human placenta using KLF5 antibody.

Background

This gene encodes a member of the Kruppel-like factor subfamily of zinc finger proteins. The encoded protein is a transcriptional activator that binds directly to a specific recognition motif in the promoters of target genes. This protein acts downstream of multiple different signaling pathways and is regulated by post-translational modification. It may participate in both promoting and suppressing cell proliferation. Expression of this gene may be changed in a variety of different cancers and in cardiovascular disease. Alternative splicing results in multiple transcript variants.

Note: This product is for in vitro research use only and is not intended for use in humans or animals.