

KLK2 antibody

Catalog No: #38527

Package Size: #38527-1 50ul #38527-2 100ul

Orders: order@signalwayantibody.comSupport: tech@signalwayantibody.com

Description

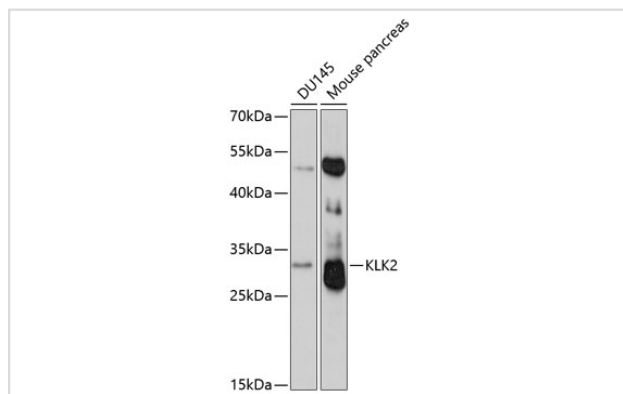
Product Name	KLK2 antibody
Host Species	Rabbit
Clonality	Polyclonal
Purification	Antibodies were purified by affinity purification using immunogen.
Applications	WB
Species Reactivity	Human, Mouse
Specificity	The antibody detects endogenous level of total KLK2 protein.
Immunogen Type	Peptide
Immunogen Description	A synthetic peptide of human KLK2.
Target Name	KLK2
Other Names	hK2; hGK-1; KLK2A2
Accession No.	Swiss-Prot#: P20151NCBI Gene ID: 3817
SDS-PAGE MW	29kd
Concentration	1.0mg/ml
Formulation	Supplied at 1.0mg/mL in phosphate buffered saline (without Mg ²⁺ and Ca ²⁺), pH 7.4, 150mM NaCl, 0.02% sodium azide and 50% glycerol.
Storage	Store at -20°C

Application Details

Western blotting: □1:500 - 1:2000

Immunohistochemistry: □1:100 - 1:200

Images



Western blot analysis of extracts of various cell lines, using KLK2 antibody at 1:3000 dilution.

Background

This gene encodes a member of the granular kallikrein protein family. Kallikreins are a subgroup of serine proteases that are clustered on

chromosome 19. Members of this family are involved in a diverse array of biological functions. The protein encoded by this gene is a highly active trypsin-like serine protease that selectively cleaves at arginine residues. This protein is primarily expressed in prostatic tissue and is responsible for cleaving pro-prostate-specific antigen into its enzymatically active form. This gene is highly expressed in prostate tumor cells and may be a prognostic marker for prostate cancer risk. Alternate splicing results in both coding and non-coding transcript variants.

Note: This product is for in vitro research use only and is not intended for use in humans or animals.