

ZC3HC1 antibody

Catalog No: #38830



Package Size: #38830-1 50ul #38830-2 100ul

Orders: order@signalwayantibody.comSupport: tech@signalwayantibody.com

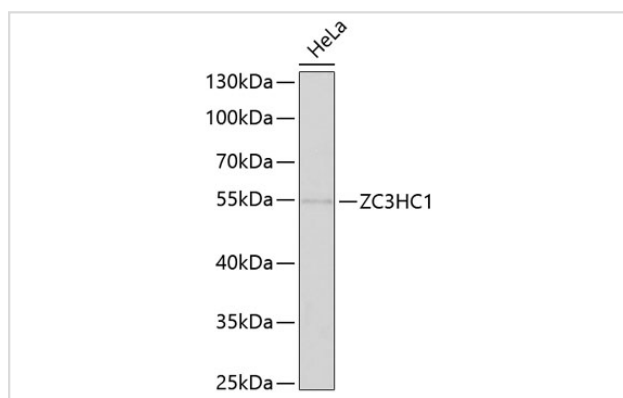
Description

Product Name	ZC3HC1 antibody
Host Species	Rabbit
Clonality	Polyclonal
Purification	Antibodies were purified by affinity purification using immunogen.
Applications	WB
Species Reactivity	Human, Mouse
Specificity	The antibody detects endogenous level of total ZC3HC1 protein.
Immunogen Type	Recombinant Protein
Immunogen Description	Recombinant protein of human ZC3HC1.
Target Name	ZC3HC1
Other Names	NIPA; HSPC216;
Accession No.	Swiss-Prot#: Q86WB0 NCBI Gene ID: 51530
SDS-PAGE MW	55kd
Concentration	1.0mg/ml
Formulation	Supplied at 1.0mg/mL in phosphate buffered saline (without Mg ²⁺ and Ca ²⁺), pH 7.4, 150mM NaCl, 0.02% sodium azide and 50% glycerol.
Storage	Store at -20°C

Application Details

Western blotting: □ 1:500 - 1:2000

Images



Western blot analysis of extracts of HeLa cells, using ZC3HC1 antibody at 1:1000 dilution.

Background

This gene encodes an F-box-containing protein that is a component of an SCF-type E3 ubiquitin ligase complex that regulates the onset of cell division. The G2/M transition in the cell cycle requires the interaction of the proteins cyclin B1 and cyclin-dependent kinase 1. The activated ubiquitin

ligase complex targets the protein cyclin B1 for degradation, preventing this transition to mitosis.

Note: This product is for in vitro research use only and is not intended for use in humans or animals.