

BUB3 antibody

Catalog No: #38989



Package Size: #38989-1 50ul #38989-2 100ul

Orders: [order@signalwayantibody.com](mailto:order@signalwayantibody.com)  
Support: [tech@signalwayantibody.com](mailto:tech@signalwayantibody.com)

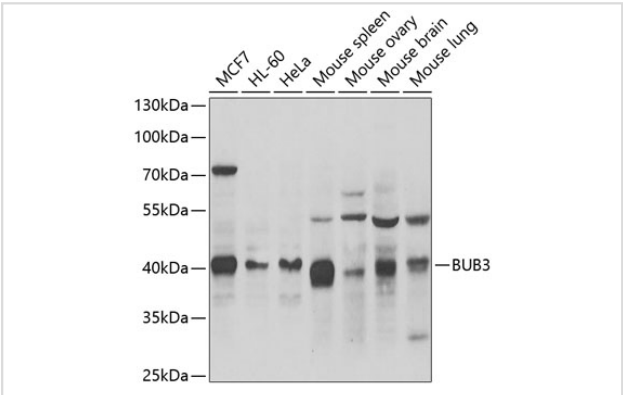
Description

Product Name	BUB3 antibody
Host Species	Rabbit
Clonality	Polyclonal
Isotype	IgG
Purification	Affinity purification
Applications	WB,IF
Species Reactivity	Human,Mouse,Rat
Specificity	The antibody detects endogenous level of total BUB3 protein.
Immunogen Type	Recombinant Protein
Immunogen Description	Recombinant fusion protein of human BUB3 (NP_004716.1).
Target Name	BUB3
Other Names	BUB3;BUB3L;hBUB3
Accession No.	Uniprot:O43684GeneID:9184
SDS-PAGE MW	40kDa
Concentration	1.0mg/ml
Formulation	PBS with 0.02% sodium azide,50% glycerol,pH7.3.
Storage	Store at -20°C. Avoid freeze / thaw cycles.

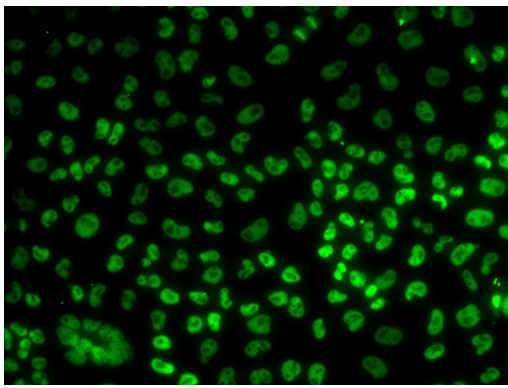
Application Details

WB 1:500 - 1:2000IF 1:50 - 1:200

Images



Western blot analysis of extracts of various cell lines, using BUB3 antibody.



Immunofluorescence analysis of U2OS cells using BUB3 antibody.

## Background

This gene encodes a protein involved in spindle checkpoint function. The encoded protein contains four WD repeat domains and has sequence similarity with the yeast BUB3 protein. Alternate transcriptional splice variants, encoding different isoforms, have been characterized.

## Published Papers

et al., PKM2 regulates chromosome segregation and mitosis progression of tumor cells. In Mol Cell on 2014 Jan 9 by Yuhui Jiang, Xinjian Li et al.. PMID: 24316223, (2014)

[PMID:24316223](#)

Note: This product is for in vitro research use only and is not intended for use in humans or animals.