

KYNU antibody

Catalog No: #39066



Package Size: #39066-1 50ul #39066-2 100ul

Orders: order@signalwayantibody.com
Support: tech@signalwayantibody.com

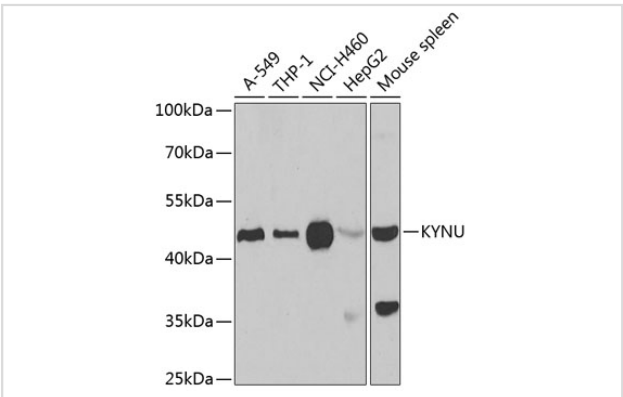
Description

Product Name	KYNU antibody
Host Species	Rabbit
Clonality	Polyclonal
Purification	Antibodies were purified by affinity purification using immunogen.
Applications	WB,IHC,IF
Species Reactivity	Human,Mouse,Rat
Specificity	The antibody detects endogenous level of total KYNU protein.
Immunogen Type	Recombinant Protein
Immunogen Description	Recombinant protein of human KYNU.
Target Name	KYNU
Accession No.	Swiss-Prot#: Q16719NCBI Gene ID: 8942
SDS-PAGE MW	52kd
Concentration	1.0mg/ml
Formulation	Supplied at 1.0mg/mL in phosphate buffered saline (without Mg2+ and Ca2+), pH 7.4, 150mM NaCl, 0.02% sodium azide and 50% glycerol.
Storage	Store at -20°C

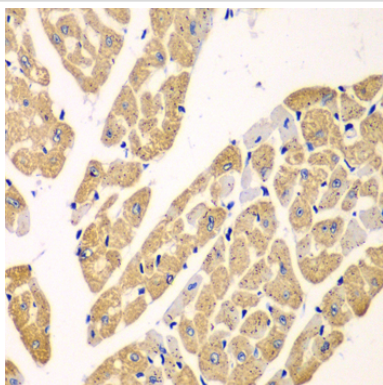
Application Details

Western blotting: □1:500 - 1:2000

Images



Western blot analysis of extracts of various cell lines, using KYNU antibody at 1:1000 dilution.



Immunohistochemistry of paraffin-embedded mouse heart using KYNu antibody at dilution of 1:100 (40x lens).

Background

Kynureninase is a pyridoxal-5'-phosphate (pyridoxal-P) dependent enzyme that catalyzes the cleavage of L-kynurenine and L-3-hydroxykynurenine into anthranilic and 3-hydroxyanthranilic acids, respectively. Kynureninase is involved in the biosynthesis of NAD cofactors from tryptophan through the kynurenine pathway. Alternative splicing results in multiple transcript variants.

Note: This product is for in vitro research use only and is not intended for use in humans or animals.