

## QPCT antibody

Catalog No: #39122

Package Size: #39122-1 50ul #39122-2 100ul

Orders: [order@signalwayantibody.com](mailto:order@signalwayantibody.com)Support: [tech@signalwayantibody.com](mailto:tech@signalwayantibody.com)

## Description

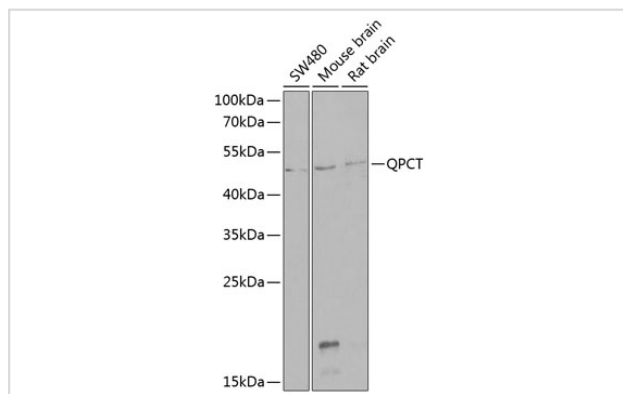
Product Name	QPCT antibody
Host Species	Rabbit
Clonality	Polyclonal
Purification	Antibodies were purified by affinity purification using immunogen.
Applications	WB,IF
Species Reactivity	Human,Mouse,Rat
Specificity	The antibody detects endogenous level of total QPCT protein.
Immunogen Type	Recombinant Protein
Immunogen Description	Recombinant protein of human QPCT.
Target Name	QPCT
Other Names	QC; GCT; sQC;
Accession No.	Swiss-Prot#: Q16769NCBI Gene ID: 25797
SDS-PAGE MW	40kd
Concentration	1.0mg/ml
Formulation	Supplied at 1.0mg/mL in phosphate buffered saline (without Mg <sup>2+</sup> and Ca <sup>2+</sup> ), pH 7.4, 150mM NaCl, 0.02% sodium azide and 50% glycerol.
Storage	Store at -20°C

## Application Details

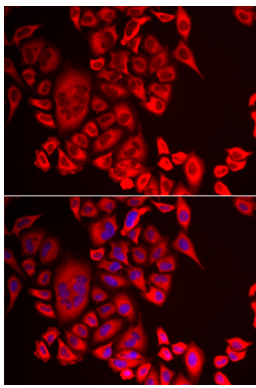
Western blotting: □1:500 - 1:2000

Immunofluorescence: □1:50 - 1:100

## Images



Western blot analysis of extracts of various cell lines, using QPCT antibody at 1:1000 dilution.



Immunofluorescence analysis of MCF-7 cells using QPCT antibody. Blue: DAPI for nuclear staining.

## Background

This gene encodes human pituitary glutaminyl cyclase, which is responsible for the presence of pyroglutamyl residues in many neuroendocrine peptides. The amino acid sequence of this enzyme is 86% identical to that of bovine glutaminyl cyclase.

Note: This product is for in vitro research use only and is not intended for use in humans or animals.