

keratin 7/Cytokeratin 7 Antibody

Catalog No: #39340

Orders: order@signalwayantibody.comSupport: tech@signalwayantibody.com

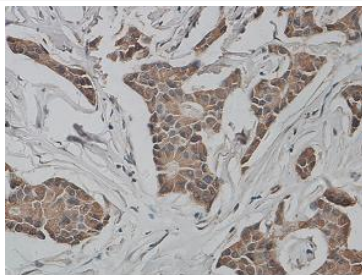
Description

Product Name	keratin 7/Cytokeratin 7 Antibody
Host Species	Rabbit
Clonality	Polyclonal
Purification	Affinity purified
Applications	ELISA WB IHC
Species Reactivity	Hu
Immunogen Type	Peptide-KLH
Immunogen Description	Rabbit polyclonal keratin 7 antibody was raised against a 15 amino acid peptide at the C terminal residues of human keratin 7 protein.
Target Name	keratin 7/Cytokeratin 7
Concentration	1.0mg/ml
Formulation	PBS, pH 7.4 with 0.02% Sodium Azide
Storage	This product is stable for several weeks at 4°C as an undiluted liquid. Dilute only prior to immediate use. For extended storage, aliquot contents and freeze at -20°C or below. Avoid cycles of freezing and thawing. Expiration date is one (1) year from date of receipt.

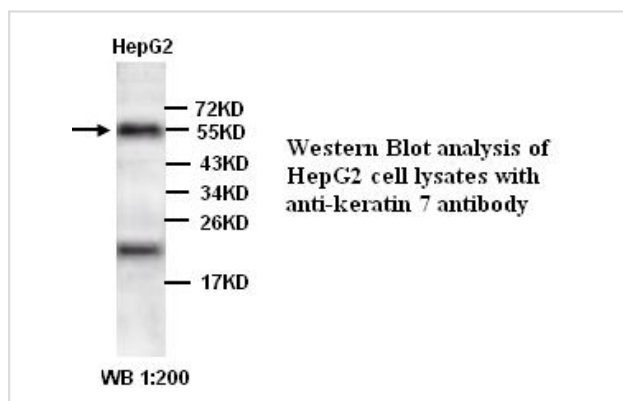
Application Details

ELISA WB IHC

Images



Immunohistochemical staining of formalin-fixed paraffin-embedded breast carcinoma showing Cytoplasmic staining with anti-keratin 7 antibody dilution: 1:200.



Note: This product is for in vitro research use only and is not intended for use in humans or animals.