

VIPR1 Antibody

Catalog No: #40290



Package Size: #40290-1 50ul #40290-2 100ul

Orders: order@signalwayantibody.comSupport: tech@signalwayantibody.com

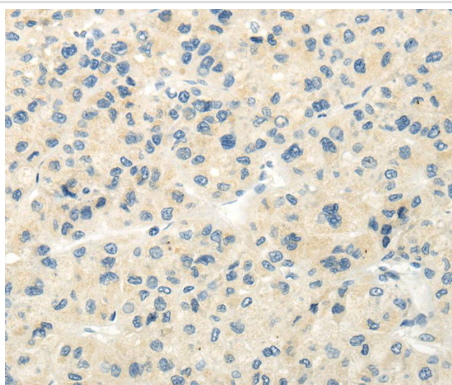
Description

Product Name	VIPR1 Antibody
Host Species	Rabbit
Clonality	Polyclonal
Purification	Antigen affinity purification.
Applications	IHC
Species Reactivity	Hu
Specificity	The antibody detects endogenous levels of total VIPR1 protein.
Immunogen Type	Peptide
Immunogen Description	Synthetic peptide of human vasoactive intestinal peptide receptor 1
Target Name	VIPR1
Other Names	II; HVR1; RDC1; V1RG; VIPR; VIRG; VAPC1; VPAC1; VPAC1R; VIP-R-1; VPCAP1R; PACAP-R2; PACAP-R-2
Accession No.	Swiss-Prot:P32241 Gene Accssion:NP_004615
Concentration	0.7mg/ml
Formulation	Rabbit IgG in pH7.4 PBS, 0.05% NaN ₃ , 40% Glycerol.
Storage	Store at -20°C

Application Details

Immunohistochemistry:1:10-1:50

Images



Immunohistochemical analysis of paraffin-embedded Human liver cancer tissue using #40290 at dilution 1/20.

Background

This gene encodes a receptor for vasoactive intestinal peptide, a small neuropeptide. Vasoactive intestinal peptide is involved in smooth muscle relaxation, exocrine and endocrine secretion, and water and ion flux in lung and intestinal epithelia. Its actions are effected through integral membrane receptors associated with a guanine nucleotide binding protein which activates adenylate cyclase. Several transcript variants encoding different

isoforms have been found for this gene.

Published Papers

el at., Spatiotemporal Expression Changes of PACAP and Its Receptors In Retinal Ganglion Cells After Optic Nerve Crush. In J Mol Neurosci on 2019 Jul by Ye D, Yang Y, et al..PMID:30415445, , (2019)

[PMID:30415445](#)

Note: This product is for in vitro research use only and is not intended for use in humans or animals.