

PKM Antibody

Catalog No: #40306

Package Size: #40306-1 50ul #40306-2 100ul

Orders: order@signalwayantibody.comSupport: tech@signalwayantibody.com

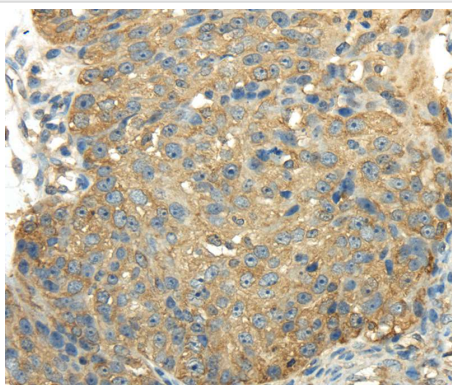
Description

Product Name	PKM Antibody
Host Species	Rabbit
Clonality	Polyclonal
Purification	Antigen affinity purification.
Applications	IHC
Species Reactivity	Hu Ms
Specificity	The antibody detects endogenous levels of total PKM protein.
Immunogen Type	Peptide
Immunogen Description	Synthetic peptide of human pyruvate kinase, muscle
Target Name	PKM
Other Names	PK3; TCB; OIP3; PKM2; CTHBP; THBP1; HEL-S-30
Accession No.	Swiss-Prot:P14618Gene Accssion:NP_872270
Concentration	1.7mg/ml
Formulation	Rabbit IgG in pH7.4 PBS, 0.05% NaN ₃ , 40% Glycerol.
Storage	Store at -20°C

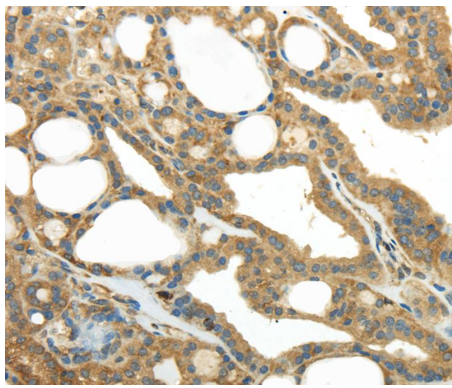
Application Details

Immunohistochemistry: 1:25-1:100

Images



Immunohistochemical analysis of paraffin-embedded Human breast cancer tissue using #40306 at dilution 1/25.



Immunohistochemical analysis of paraffin-embedded Human thyroid cancer tissue using #40306 at dilution 1/25.

Background

This gene encodes a protein involved in glycolysis. The encoded protein is a pyruvate kinase that catalyzes the transfer of a phosphoryl group from phosphoenolpyruvate to ADP, generating ATP and pyruvate. This protein has been shown to interact with thyroid hormone and may mediate cellular metabolic effects induced by thyroid hormones. This protein has been found to bind Opa protein, a bacterial outer membrane protein involved in gonococcal adherence to and invasion of human cells, suggesting a role of this protein in bacterial pathogenesis. Several alternatively spliced transcript variants encoding a few distinct isoforms have been reported.

Published Papers

el at., Identification of lactate metabolism-related genes for glioma metabolic reprogramming, , (2022)

PMID:

Note: This product is for in vitro research use only and is not intended for use in humans or animals.