

Actin  $\beta$  Polyclonal Antibody

Catalog No: #40552



Package Size: #40552-1 50ul #40552-2 100ul

Orders: [order@signalwayantibody.com](mailto:order@signalwayantibody.com)Support: [tech@signalwayantibody.com](mailto:tech@signalwayantibody.com)

## Description

Product Name	Actin $\beta$ Polyclonal Antibody
Host Species	Rabbit
Clonality	Polyclonal
Purification	The antibody was affinity-purified from rabbit antiserum by affinity-chromatography using epitope-specific immunogen.
Applications	WB IHC ELISA
Species Reactivity	Hu Ms Rt
Specificity	Actin $\beta$ Polyclonal Antibody detects endogenous levels of Actin $\beta$ protein.
Immunogen Type	peptide
Immunogen Description	Synthesized peptide derived from the N-terminal region of human Actin $\beta$ .
Target Name	Actin $\beta$
Other Names	ACTB; Actin; cytoplasmic 1; Beta-actin
Accession No.	Swiss-Prot: P60709NCBI Gene ID: 60
SDS-PAGE MW	42kd
Concentration	1mg/ml
Formulation	Liquid in PBS containing 50% glycerol, 0.5% BSA and 0.02% sodium azide.
Storage	Store at -20°C/1 year

## Application Details

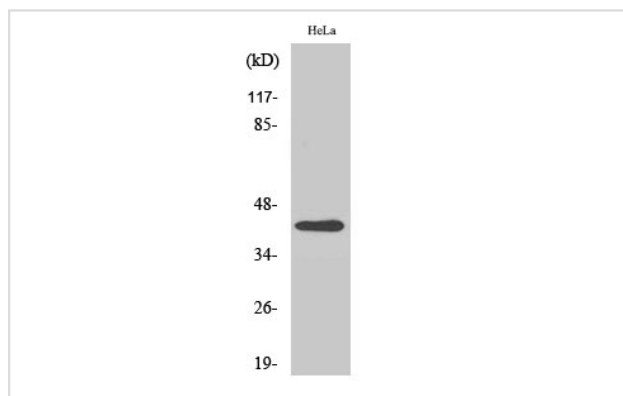
Western Blot: 1/1000 - 1/4000.

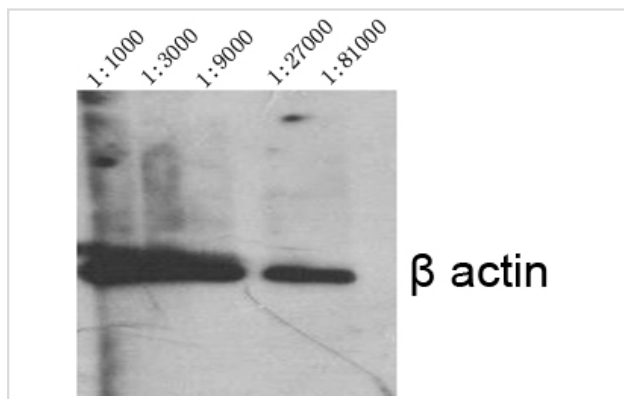
Immunohistochemistry: 1/100 - 1/300.

ELISA: 1/20000.

Not yet tested in other applications.

## Images

Western Blot analysis of HepG2 cells using Actin  $\beta$  Polyclonal Antibody



Western Blot analysis of HELA cells using Actin  $\beta$  Polyclonal Antibody

## Published Papers

el at., Propofol inhibits hepatocellular carcinoma growth and invasion through the HMGA2 $\beta$   $\zeta$   $\beta$  mediated Wnt/ $\epsilon$ -Y $\beta$   $\zeta$  Aatenin pathway.Exp Ther Med on 2017 May by Wei Ou , Jie Lv,et al..PMID: 28565871, , (2017)

[PMID:28565871](#)

el at., Inhibition of cardiotrophin $\beta$  overexpression is involved in the anti  $\zeta$  fibrotic effect of Astrogaloside IV.In Mol Med Rep on 2017 Dec by Guizhi Jia, Bin Leng,et al..PMID: 28990065, , (2017)

[PMID:28990065](#)

Note: This product is for in vitro research use only and is not intended for use in humans or animals.