

ANT4 Polyclonal Antibody

Catalog No: #40596

Package Size: #40596-1 50ul #40596-2 100ul

Orders: order@signalwayantibody.comSupport: tech@signalwayantibody.com

Description

Product Name	ANT4 Polyclonal Antibody
Host Species	Rabbit
Clonality	Polyclonal
Purification	The antibody was affinity-purified from rabbit antiserum by affinity-chromatography using epitope-specific immunogen.
Applications	WB IHC IF ELISA
Species Reactivity	Hu Ms
Specificity	ANT4 Polyclonal Antibody detects endogenous levels of ANT4 protein.
Immunogen Type	peptide
Immunogen Description	Synthesized peptide derived from the Internal region of human ANT4.
Target Name	ANT4
Other Names	SLC25A31; AAC4; ANT4; SFEC; ADP/ATP translocase 4; ADP; ATP carrier protein 4; Adenine nucleotide translocator 4; ANT 4; Solute carrier family 25 member 31; Sperm flagellar energy carrier protein
Accession No.	Swiss-Prot: Q9H0C2NCBI Gene ID: 83447
SDS-PAGE MW	35kd
Concentration	1mg/ml
Formulation	Liquid in PBS containing 50% glycerol, 0.5% BSA and 0.02% sodium azide.
Storage	Store at -20°C/1 year

Application Details

Western Blot: 1/500 - 1/2000.

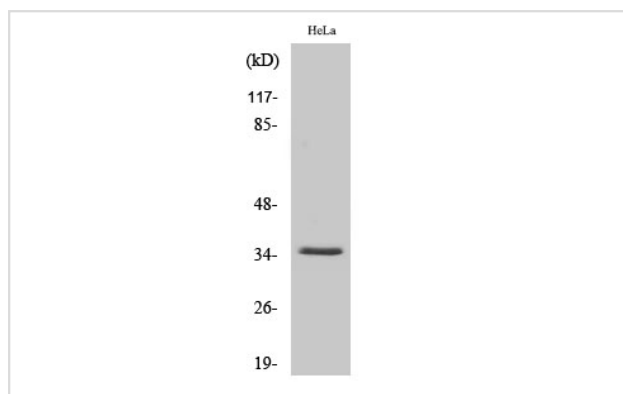
Immunohistochemistry: 1/100 - 1/300.

Immunofluorescence: 1/200 - 1/1000.

ELISA: 1/40000.

Not yet tested in other applications.

Images



Western Blot analysis of COLO205 cells using ANT4 Polyclonal Antibody

Published Papers

el at., ANT-dependent MPTP underlies necrotic myofiber death in muscular dystrophyInSci AdvOn2023 Aug 25byMichael J Bround?1,?Julian R Havens et al..PMID: 37624892, , (2023)

[PMID:37624892](#)

el at., Inhibition of mitochondrial permeability transition by deletion of the ANT family and CypD. In Sci Adv on 2019 Aug 28 by Karch J, Bround MJ, et al..PMID:31489369, , (2019)

[PMID:31489369](#)

Note: This product is for in vitro research use only and is not intended for use in humans or animals.