

Atm Polyclonal Antibody

Catalog No: #40627

Package Size: #40627-1 50ul #40627-2 100ul

Orders: order@signalwayantibody.comSupport: tech@signalwayantibody.com

Description

Product Name	Atm Polyclonal Antibody
Host Species	Rabbit
Clonality	Polyclonal
Purification	The antibody was affinity-purified from rabbit antiserum by affinity-chromatography using epitope-specific immunogen.
Applications	WB IHC ELISA
Species Reactivity	Hu Ms
Specificity	Atm Polyclonal Antibody detects endogenous levels of Atm protein.
Immunogen Type	peptide
Immunogen Description	Synthesized peptide derived from human Atm around the non-phosphorylation site of S1981.
Target Name	Atm
Other Names	ATM; Serine-protein kinase ATM; Ataxia telangiectasia mutated; A-T mutated
Accession No.	Swiss-Prot: Q13315NCBI Gene ID: 472
SDS-PAGE MW	350kd
Concentration	1mg/ml
Formulation	Liquid in PBS containing 50% glycerol, 0.5% BSA and 0.02% sodium azide.
Storage	Store at -20°C/1 year

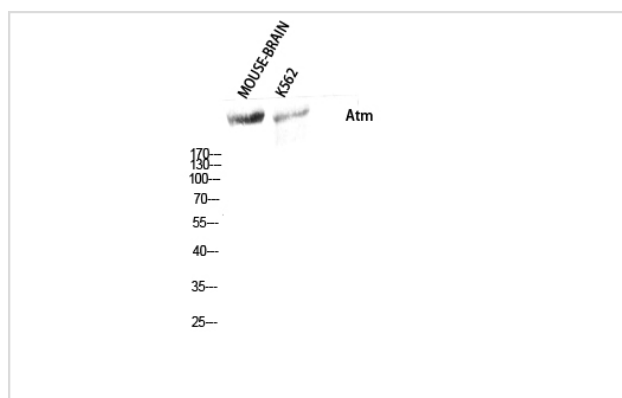
Application Details

Western Blot: 1:500-2000

Immunohistochemistry: 1/100 - 1/300

ELISA: 1/40000

Images



Western Blot analysis of MOUSE-BRAIN K562 cells using Atm Polyclonal Antibody

Published Papers

et al., PTEN expression in U251 glioma cells enhances their sensitivity to ionizing radiation by suppressing DNA repair capacity. In Eur Rev Med Pharmacol Sci on 2019 Dec by Li HL, Wang CY, et al..PMID:31841199, , (2019)

[PMID:31841199](#)

Note: This product is for in vitro research use only and is not intended for use in humans or animals.