

RICTOR antibody

Catalog No: #22594



Orders: order@signalwayantibody.com
Support: tech@signalwayantibody.com

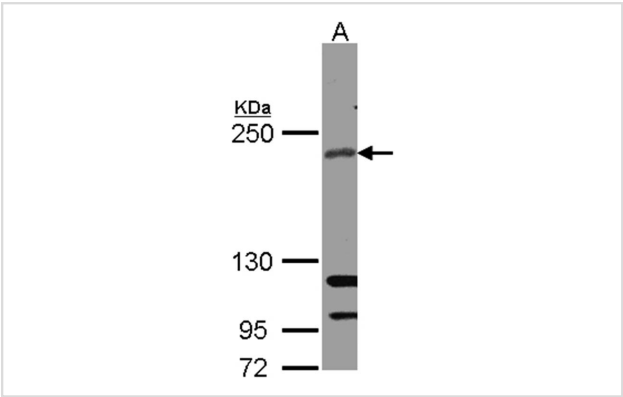
Description

Product Name	RICTOR antibody
Host Species	Rabbit
Clonality	Polyclonal
Purification	Purified by antigen-affinity chromatography.
Applications	WB IHC IF
Species Reactivity	Hu Ms
Immunogen Type	Peptide
Immunogen Description	Synthetic peptide contain a sequence corresponding to a region within amino acids 1648 and 1708 of RICTOR
Target Name	RICTOR
Accession No.	NCBI Gene ID: 253260NCBI mRNA#: NM_152756.3NCBI Protein#: NP_689969
Concentration	1mg/ml
Formulation	Supplied in 0.1M Tris-buffered saline with 10% Glycerol (pH7.0). 0.01% Thimerosal was added as a preservative.
Storage	Store at -20°C for long term preservation (recommended). Store at 4°C for short term use.

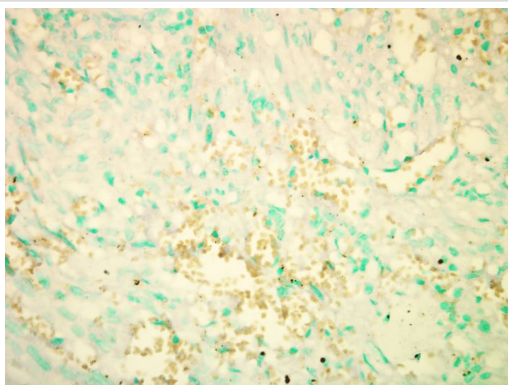
Application Details

Predicted MW: 192kd
Western blotting: 1:500-1:3000
Immunohistochemistry: 1:100-1:250
Immunofluorescence: 1:100-1:200

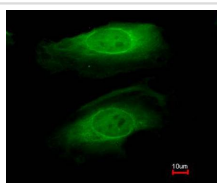
Images



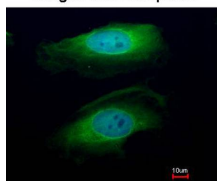
Sample(30 ug whole cell lysate)
A: A431
5% SDS PAGE
Primary antibody diluted at 1: 1000



Staining of Human Kidney cancer tissue sections using anti-Rictor antibody.



Merged with DNA probe



Immunofluorescence analysis of paraformaldehyde-fixed HeLa, using RICTOR antibody at 1: 200 dilution.

Background

RICTOR and MTOR (FRAP1; MIM 601231) are components of a protein complex that integrates nutrient- and growth factor-derived signals to regulate cell growth (Sarbasov et al., 2004 [PubMed 15268862]).[supplied by OMIM]

Note: This product is for in vitro research use only and is not intended for use in humans or animals.