

# CHOP Polyclonal Antibody

Catalog No: #40744

Package Size: #40744-1 50ul #40744-2 100ul

Orders: [order@signalwayantibody.com](mailto:order@signalwayantibody.com)Support: [tech@signalwayantibody.com](mailto:tech@signalwayantibody.com)

## Description

Product Name	CHOP Polyclonal Antibody
Host Species	Rabbit
Clonality	Polyclonal
Purification	The antibody was affinity-purified from rabbit antiserum by affinity-chromatography using epitope-specific immunogen.
Applications	WB IHC IF ELISA
Species Reactivity	Hu Ms
Specificity	CHOP Polyclonal Antibody detects endogenous levels of CHOP protein.
Immunogen Type	peptide
Immunogen Description	Synthesized peptide derived from human CHOP around the non-phosphorylation site of S30.
Target Name	CHOP
Other Names	DDIT3; CHOP; CHOP10; GADD153; DNA damage-inducible transcript 3 protein; DDIT-3; C/EBP-homologous protein; CHOP; C/EBP-homologous protein 10; CHOP-10; Growth arrest and DNA damage-inducible protein GADD153
Accession No.	Swiss-Prot: P35638NCBI Gene ID: 1649
SDS-PAGE MW	19kd
Concentration	1mg/ml
Formulation	Liquid in PBS containing 50% glycerol, 0.5% BSA and 0.02% sodium azide.
Storage	Store at -20°C/1 year

## Application Details

Western Blot: 1/500 - 1/2000.

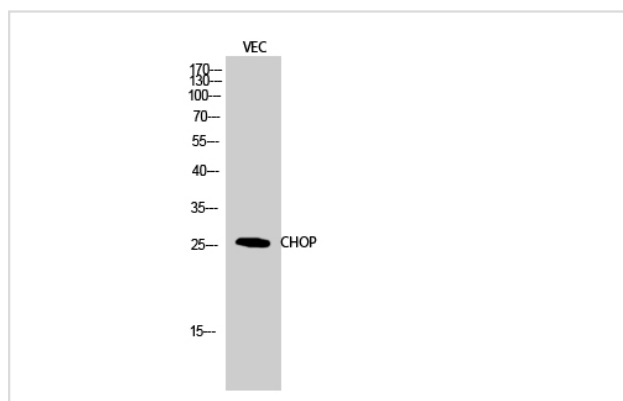
Immunohistochemistry: 1/100 - 1/300.

Immunofluorescence: 1/200 - 1/1000.

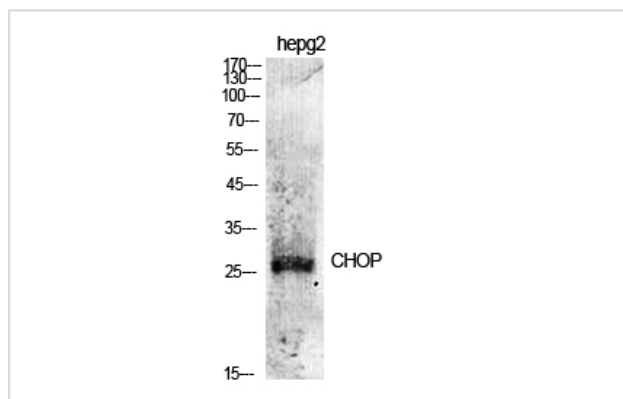
ELISA: 1/5000.

Not yet tested in other applications.

## Images



Western Blot analysis of VEC cells using CHOP Polyclonal Antibody



Western Blot analysis of HepG2 cells using CHOP Polyclonal Antibody

## Published Papers

el at., Sestrin2 Overexpression Ameliorates Endoplasmic Reticulum Stress-Induced Apoptosis via Inhibiting mTOR Pathway in HepG2 Cells. In *Int J Endocrinol* on 2022 Dec 10 by Hailing Hu, Zhijun Luo, et al..PMID:36536875, , (2022)

[PMID:36536875](#)

el at., Endoplasmic reticulum stress is involved in retinal injury induced by repeated transient spikes of intraocular pressure. In *J Zhejiang Univ Sci B* on 2021 Sept 15 by Xue Yang, Xiaowei Yu et al..PMID: 34514754, , (2021)

[PMID:34514754](#)

el at., Cetuximab enhances oridonin-induced apoptosis through mitochondrial pathway and endoplasmic reticulum stress in laryngeal squamous cell carcinoma cells. In *Toxicol In Vitro* on 2020 May 12 by Ning Kang, Shijie Cao, et al..PMID:32407876, , (2020)

[PMID:32407876](#)

el at., Suppressing endoplasmic reticulum stress-related autophagy attenuates retinal light injury. In *Aging (Albany NY)* on 2020 Aug 28 by Jing-Yao Song, Bin Fan,et al..PMID: 32858529, , (2020)

[PMID:32858529](#)

el at., Magnesium Isoglycyrrhizinate Promotes the Activated Hepatic Stellate Cells Apoptosis via Endoplasmic Reticulum Stress and Ameliorates Fibrogenesis in Vitro and in Vivo.In *Biofactors* on 2017 Nov by Mianli Bian , Xingran Chen,et al..PMID: 29048780, , (2017)

[PMID:29048780](#)

el at., Quercetin Stimulates Mitochondrial Apoptosis Dependent on Activation of Endoplasmic Reticulum Stress in Hepatic Stellate Cells .In *Pharm Biol.* On 2016 Dec by Liwei He , Xianbang Hou et al..PMID:27572285

, , (2016)

[PMID:27572285](#)

el at., Inhibition of the Mitochondrial Unfolded Protein Response by Acetylcholine Alleviated Hypoxia/Reoxygenation-Induced Apoptosis of Endothelial Cells .In *Cell Cycle* on 2016 May 18 by Man Xu , Xueyuan Bi et al..PMID: 27111378, , (2016)

[PMID:27111378](#)

el at., Acetylcholine ameliorates endoplasmic reticulum stress in endothelial cells after hypoxia/reoxygenation via M3 AChR-AMPK signaling.In Cell Cycle on 2015 Aug 3 by Xueyuan Bi , Xi He et al..PMID:26066647, , (2015)

[PMID:26066647](#)

---

---

Note: This product is for in vitro research use only and is not intended for use in humans or animals.