

Cofilin Polyclonal Antibody

Catalog No: #40769

Package Size: #40769-1 50ul #40769-2 100ul

Orders: order@signalwayantibody.comSupport: tech@signalwayantibody.com

Description

Product Name	Cofilin Polyclonal Antibody
Host Species	Rabbit
Clonality	Polyclonal
Purification	The antibody was affinity-purified from rabbit antiserum by affinity-chromatography using epitope-specific immunogen.
Applications	WB IHC IF ELISA
Species Reactivity	Hu Ms Rt
Specificity	Cofilin Polyclonal Antibody detects endogenous levels of Cofilin protein.
Immunogen Type	peptide
Immunogen Description	Synthesized peptide derived from human Cofilin around the non-phosphorylation site of S3.
Target Name	Cofilin
Other Names	CFL1; CFL; Cofilin-1; 18 kDa phosphoprotein; p18; Cofilin; non-muscle isoform
Accession No.	Swiss-Prot: P23528NCBI Gene ID: 1072
SDS-PAGE MW	19kd
Concentration	1mg/ml
Formulation	Liquid in PBS containing 50% glycerol, 0.5% BSA and 0.02% sodium azide.
Storage	Store at -20°C/1 year

Application Details

Western Blot: 1/500 - 1/2000.

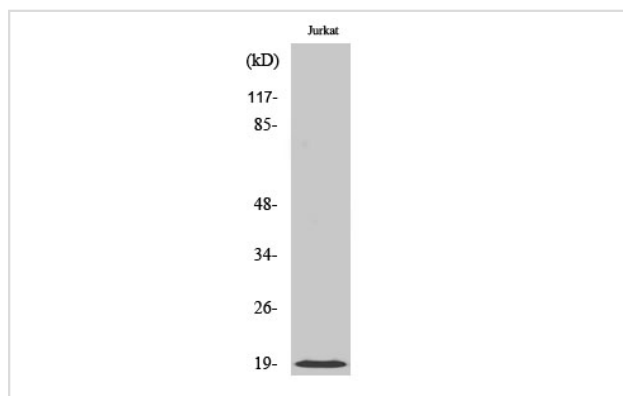
Immunohistochemistry: 1/100 - 1/300.

Immunofluorescence: 1/200 - 1/1000.

ELISA: 1/10000.

Not yet tested in other applications.

Images



Western Blot analysis of Jurkat cells using Cofilin Polyclonal Antibody

Published Papers

et al., Scribble scaffolds a signalosome for active forgetting. In Neuron on 2016 Jun 15 by Isaac Cervantes-Sandoval, Molee Chakraborty, et al.. PMID:27263975

, , (2016)

[PMID:27263975](#)

Note: This product is for in vitro research use only and is not intended for use in humans or animals.