

# HSL Polyclonal Antibody

Catalog No: #41039

Package Size: #41039-1 50ul #41039-2 100ul

Orders: [order@signalwayantibody.com](mailto:order@signalwayantibody.com)Support: [tech@signalwayantibody.com](mailto:tech@signalwayantibody.com)

## Description

Product Name	HSL Polyclonal Antibody
Host Species	Rabbit
Clonality	Polyclonal
Purification	The antibody was affinity-purified from rabbit antiserum by affinity-chromatography using epitope-specific immunogen.
Applications	WB IHC ELISA
Species Reactivity	Hu Ms Rt
Specificity	HSL Polyclonal Antibody detects endogenous levels of HSL protein.
Immunogen Type	peptide
Immunogen Description	Synthesized peptide derived from human HSL around the non-phosphorylation site of S552.
Target Name	HSL
Other Names	LIPE; Hormone-sensitive lipase; HSL
Accession No.	Swiss-Prot: Q05469NCBI Gene ID: 3991
SDS-PAGE MW	120kd
Concentration	1mg/ml
Formulation	Liquid in PBS containing 50% glycerol, 0.5% BSA and 0.02% sodium azide.
Storage	Store at -20°C/1 year

## Application Details

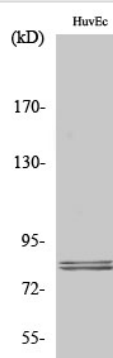
Western Blot: 1/500 - 1/2000.

Immunohistochemistry: 1/100 - 1/300.

ELISA: 1/5000.

Not yet tested in other applications.

## Images



Western Blot analysis of HuvEc cells using HSL Polyclonal Antibody

## Published Papers

---

el at., MST1 Regulates Hepatocellular Lipophagy in Nonalcoholic Fatty Liver Disease, , (2021)

PMID:

---

---

Note: This product is for in vitro research use only and is not intended for use in humans or animals.