

## UBE1 antibody

Catalog No: #22629

Orders: [order@signalwayantibody.com](mailto:order@signalwayantibody.com)Support: [tech@signalwayantibody.com](mailto:tech@signalwayantibody.com)

## Description

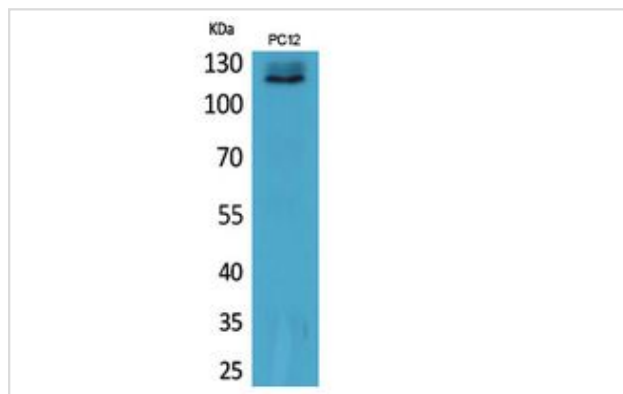
Product Name	UBE1 antibody
Host Species	Rabbit
Clonality	Polyclonal
Purification	Purified by antigen-affinity chromatography.
Applications	WB IHC
Species Reactivity	Hu Ms Rt
Immunogen Description	Synthesized peptide derived from the N-terminal region of human UBE1.
Target Name	UBE1
Accession No.	NCBI Gene ID: 7317NCBI mRNA#: NM_153280NCBI Protein#: NP_695012
Concentration	1mg/ml
Formulation	Liquid in PBS containing 50% glycerol, 0.5% BSA and 0.02% sodium azide.
Storage	Store at -20°C for long term preservation (recommended). Store at 4°C for short term use.

## Application Details

Predicted MW: 118kd

Western blotting: 1:500-1:2000

## Images



Western Blot analysis of PC12 cells using UBE1 Polyclonal Antibody.

## Background

The protein encoded by this gene catalyzes the first step in ubiquitin conjugation to mark cellular proteins for degradation. This gene complements an X-linked mouse temperature-sensitive defect in DNA synthesis, and thus may function in DNA repair. It is part of a gene cluster on chromosome Xp11.23. Alternatively spliced transcript variants that encode the same protein have been described. [provided by RefSeq]

Note: This product is for in vitro research use only and is not intended for use in humans or animals.