

## Lamin A/C Polyclonal Antibody

Catalog No: #41099



Package Size: #41099-1 50ul #41099-2 100ul

Orders: [order@signalwayantibody.com](mailto:order@signalwayantibody.com)Support: [tech@signalwayantibody.com](mailto:tech@signalwayantibody.com)

## Description

Product Name	Lamin A/C Polyclonal Antibody
Host Species	Rabbit
Clonality	Polyclonal
Purification	The antibody was affinity-purified from rabbit antiserum by affinity-chromatography using epitope-specific immunogen.
Applications	WB IHC IF ELISA
Species Reactivity	Hu Ms Rt
Specificity	Lamin A/C Polyclonal Antibody detects endogenous levels of Lamin A/C protein.
Immunogen Description	Synthesized peptide derived from human Lamin A/C around the non-phosphorylation site of S392.
Target Name	Lamin A/C
Other Names	LMNA; LMN1; Prelamin-A/C
Accession No.	Swiss-Prot: P02545NCBI Gene ID: 4000
SDS-PAGE MW	75kd
Concentration	1mg/ml
Formulation	Liquid in PBS containing 50% glycerol, 0.5% BSA and 0.02% sodium azide.
Storage	Store at -20°C/1 year

## Application Details

Western Blot: 1/500 - 1/2000.

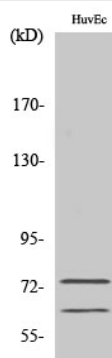
Immunohistochemistry: 1/100 - 1/300.

Immunofluorescence: 1/200 - 1/1000.

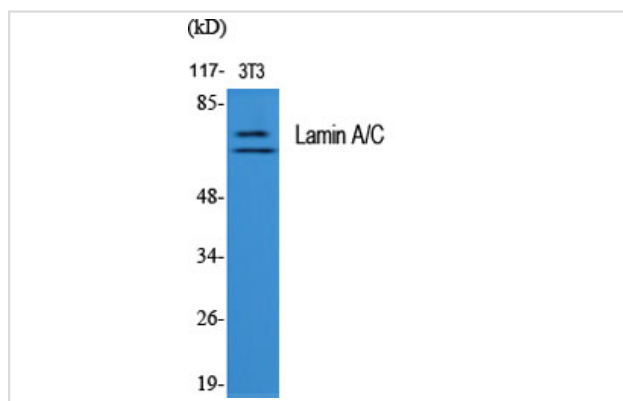
ELISA: 1/20000.

Not yet tested in other applications.

## Images



Western Blot analysis of HepG2 cells using Lamin A/C Polyclonal Antibody



Western Blot analysis of NIH-3T3 cells using Lamin A/C Polyclonal Antibody

## Published Papers

el at., Two nuclear localization signals regulate intracellular localization of the duck enteritis virus UL13 protein. In Poult Sci on 2021 Jan by Linjiang Yang, Xixia Hu,et al..PMID:33357689, , (2021)

[PMID:33357689](#)

el at., Phytoestrogens protect joints in collagen induced arthritis by increasing IgG glycosylation and reducing osteoclast activation.In Int Immunopharmacol on 2020 Mar 12 by Du N, Song L, et al..PMID:32172207, , (2020)

[PMID:32172207](#)

Note: This product is for in vitro research use only and is not intended for use in humans or animals.