

UBE2F Antibody

Catalog No: #47452

Orders: order@signalwayantibody.comSupport: tech@signalwayantibody.com

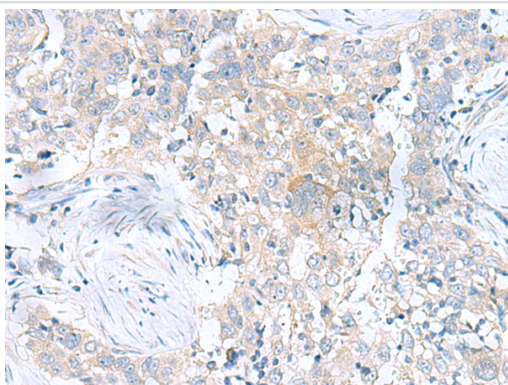
Description

Product Name	UBE2F Antibody
Host Species	Rabbit
Clonality	Polyclonal
Purification	Antigen affinity purification
Applications	IHC
Species Reactivity	Hu, Ms, Rt
Specificity	The antibody detects endogenous levels of total UBE2F protein.
Immunogen Type	Peptide
Immunogen Description	Fusion protein of human UBE2F
Target Name	UBE2F
Other Names	NCE2
Accession No.	Swiss-Prot#:Q969M7NCBI Gene ID:140739Gene Accssion:BC010549
Concentration	1.7
Formulation	Rabbit IgG in pH7.4 PBS, 0.05% NaN ₃ , 40% Glycerol.
Storage	Store at -20°C

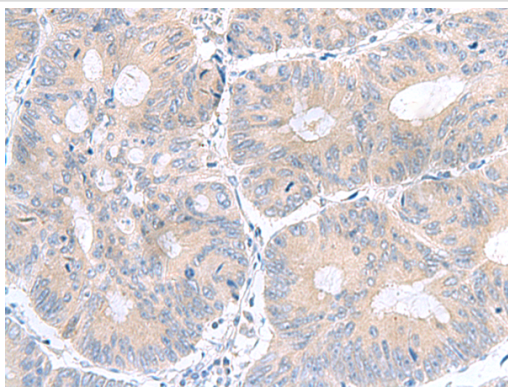
Application Details

IHC dilution:1: 100-200

Images



The image is immunohistochemistry of paraffin-embedded Human esophagus cancer tissue using 47452(UBE2F Antibody) at dilution 1/100.(Original magnification: 200)



The image is immunohistochemistry of paraffin-embedded Human colorectal cancer tissue using 47452(UBE2F Antibody) at dilution 1/100.(Original magnification: 200)

Background

Accepts the ubiquitin-like protein NEDD8 from the UBA3-NAE1 E1 complex and catalyzes its covalent attachment to other proteins. The specific interaction with the E3 ubiquitin ligase RBX2, but not RBX1, suggests that the RBX2-UBE2F complex neddylates specific target proteins, such as CUL5.

Note: This product is for in vitro research use only and is not intended for use in humans or animals.