

XPNPEP3 Antibody

Catalog No: #47467

Orders: order@signalwayantibody.comSupport: tech@signalwayantibody.com

Description

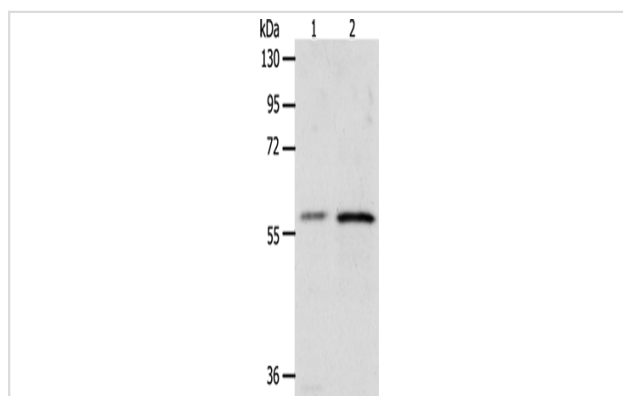
Product Name	XPNPEP3 Antibody
Host Species	Rabbit
Clonality	Polyclonal
Purification	Antigen affinity purification
Applications	WB, IHC
Species Reactivity	Hu
Specificity	The antibody detects endogenous levels of total XPNPEP3 ? protein.
Immunogen Type	Peptide
Immunogen Description	Synthetic peptide of human XPNPEP3 ?
Target Name	XPNPEP3
Other Names	APP3; NPHPL1
Accession No.	Swiss-Prot#:Q9NQH7NCBI Gene ID:63929Gene Accssion:NP_071381
Calculated MW	57 kDa
Concentration	1.3
Formulation	Rabbit IgG in pH7.4 PBS, 0.05% NaN ₃ , 40% Glycerol.
Storage	Store at -20°C

Application Details

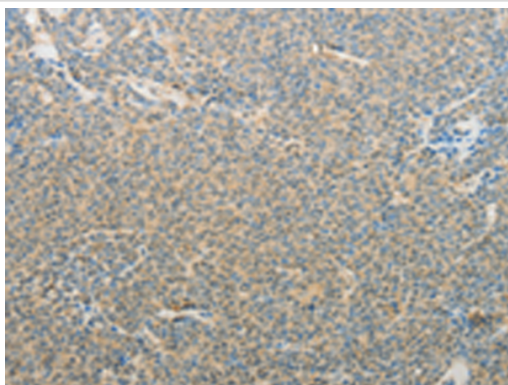
WB dilution:1:200-1000

IHC dilution:1: 25-100

Images



Gel: 10%SDS-PAGE, Lysate: 40 μ g, Lane 1-2: MCF7 cells, A431 cells, Primary antibody:47467(XPNPEP3 ? Antibody) at dilution 1/100, Secondary antibody: Goat anti rabbit IgG at 1/8000 dilution, Exposure time: 20 seconds



The image is immunohistochemistry of paraffin-embedded Human lymphoma tissue using 47467(XPNPEP3 ? Antibody) at dilution 1/40.(Original magnification: 200)

Background

The protein encoded by this gene belongs to the family of X-pro-aminopeptidases that utilize a metal cofactor, and remove the N-terminal amino acid from peptides with a proline residue in the penultimate position. This protein has been shown to localize to the mitochondria of renal cells, and have a role in ciliary function. Mutations in this gene are associated with nephronophthisis-like nephropathy-1. Alternatively spliced transcript variants encoding different isoforms have been noted for this gene, however, expression of some of these isoforms in vivo is not known.

Note: This product is for in vitro research use only and is not intended for use in humans or animals.