

XPC Antibody

Catalog No: #47500

Orders: order@signalwayantibody.comSupport: tech@signalwayantibody.com

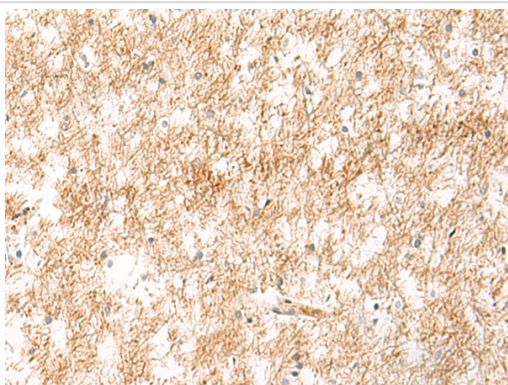
Description

Product Name	XPC Antibody
Host Species	Rabbit
Clonality	Polyclonal
Purification	Antigen affinity purification
Applications	IHC
Species Reactivity	Hu
Specificity	The antibody detects endogenous levels of total XPC protein.
Immunogen Type	Peptide
Immunogen Description	Synthetic peptide of human XPC
Target Name	XPC
Other Names	XP3; RAD4; XPCC; p125
Accession No.	Swiss-Prot#:Q01831NCBI Gene ID:7508Gene Accssion:NP_004619
Concentration	0.7
Formulation	Rabbit IgG in pH7.4 PBS, 0.05% NaN ₃ , 40% Glycerol.
Storage	Store at -20°C

Application Details

IHC dilution:1: 30-150

Images



The image is immunohistochemistry of paraffin-embedded Human brain tissue using 47500(XPC Antibody) at dilution 1/25.(Original magnification: 200)

Background

The protein encoded by this gene is a key component of the XPC complex, which plays an important role in the early steps of global genome nucleotide excision repair (NER). The encoded protein is important for damage sensing and DNA binding, and shows a preference for single-stranded DNA. Mutations in this gene or some other NER components can result in Xeroderma pigmentosum, a rare autosomal recessive disorder characterized by increased sensitivity to sunlight with the development of carcinomas at an early age. Alternatively spliced transcript variants have been found for this gene.

Note: This product is for in vitro research use only and is not intended for use in humans or animals.