

IRX5 Antibody

Catalog No: #47665

Orders: order@signalwayantibody.comSupport: tech@signalwayantibody.com

Description

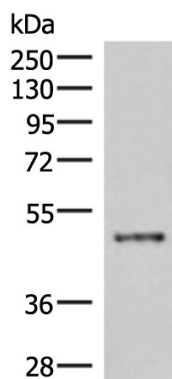
Product Name	IRX5 Antibody
Host Species	Rabbit
Clonality	Polyclonal
Purification	Antigen affinity purification
Applications	WB, IHC
Species Reactivity	Hu, Ms
Specificity	The antibody detects endogenous levels of total IRX5 protein.
Immunogen Type	Peptide
Immunogen Description	Synthetic peptide of human IRX5
Target Name	IRX5
Other Names	HMMS; IRXB2; IRX-2a
Accession No.	Swiss-Prot#:P78411NCBI Gene ID:10265Gene Accssion:NP_005844
Calculated MW	50 kDa
Concentration	0.8
Formulation	Rabbit IgG in pH7.4 PBS, 0.05% NaN ₃ , 40% Glycerol.
Storage	Store at -20°C

Application Details

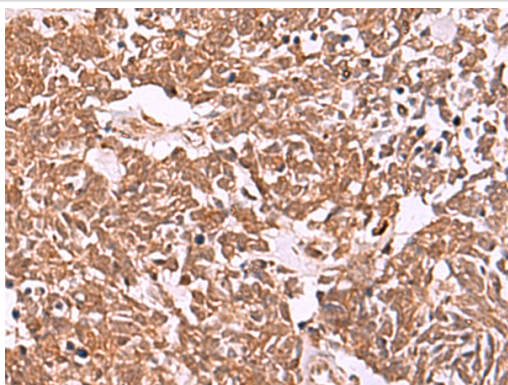
WB dilution:1:200-1000

IHC dilution:1: 30-150

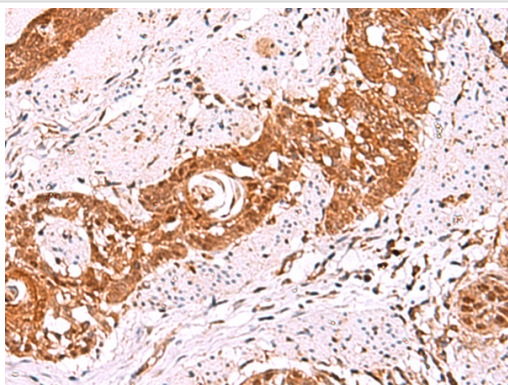
Images



Gel: 8%SDS-PAGE, Lysate: 40 μ g, Lane: Mouse lung tissue lysate, Primary antibody:47665(IRX5 Antibody) at dilution 1/300, Secondary antibody: Goat anti rabbit IgG at 1/8000 dilution, Exposure time: 4 minutes



The image is immunohistochemistry of paraffin-embedded Human lung cancer tissue using 47665(IRX5 Antibody) at dilution 1/30.(Original magnification: 200)



The image is immunohistochemistry of paraffin-embedded Human esophagus cancer tissue using 47665(IRX5 Antibody) at dilution 1/30.(Original magnification: 200)

Background

This gene encodes a member of the iroquois homeobox gene family, which are involved in several embryonic developmental processes. Knockout mice lacking this gene show that it is required for retinal cone bipolar cell differentiation, and that it negatively regulates potassium channel gene expression in the heart to ensure coordinated cardiac repolarization. Alternatively spliced transcript variants encoding different isoforms have been found for this gene.

Note: This product is for in vitro research use only and is not intended for use in humans or animals.