

# KCNK2 Antibody

Catalog No: #47807



Orders: [order@signalwayantibody.com](mailto:order@signalwayantibody.com)  
Support: [tech@signalwayantibody.com](mailto:tech@signalwayantibody.com)

## Description

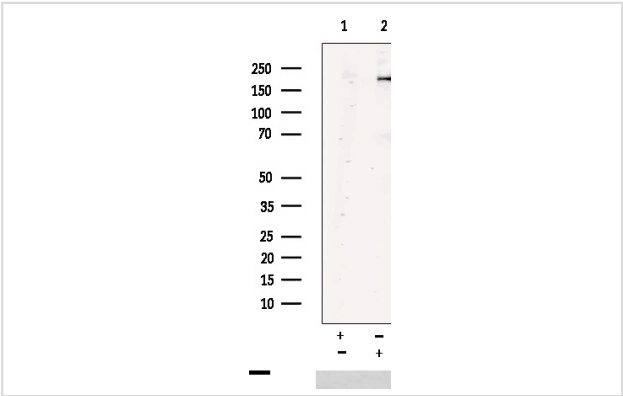
Product Name	KCNK2 Antibody
Host Species	Rabbit
Clonality	Polyclonal
Purification	Antigen affinity purification
Applications	WB, IHC
Species Reactivity	Hu, Ms, Rt
Specificity	The antibody detects endogenous levels of total KCNK2 protein.
Immunogen Type	Peptide
Immunogen Description	Synthetic peptide of human KCNK2
Target Name	KCNK2
Other Names	TREK; TPKC1; TREK1; K2p2.1; TREK-1; hTREK-1c; hTREK-1e
Accession No.	Swiss-Prot#:O95069NCBI Gene ID:3776Gene Accssion:NP_001017425
Calculated MW	47 kDa
Concentration	0.8
Formulation	Rabbit IgG in pH7.4 PBS, 0.05% NaN3, 40% Glycerol.
Storage	Store at -20°C

## Application Details

WB dilution:1:200-1000

IHC dilution:1: 30-150

## Images



Gel: 8%SDS-PAGE, Lysate: 40  $\mu$ g, Lane: Human cerebrum tissue lysate, Primary antibody:47807(KCNK2 Antibody) at dilution 1/200, Secondary antibody: Goat anti rabbit IgG at 1/5000 dilution, Exposure time: 1 minute

## Background

This gene encodes one of the members of the two-pore-domain background potassium channel protein family. This type of potassium channel is formed by two homodimers that create a channel that leaks potassium out of the cell to control resting membrane potential. The channel can be opened, however, by certain anesthetics, membrane stretching, intracellular acidosis, and heat. Three transcript variants encoding different isoforms have been found for this gene.

---

Note: This product is for in vitro research use only and is not intended for use in humans or animals.