

SDF-1 Polyclonal Antibody

Catalog No: #41422



Package Size: #41422-1 50ul #41422-2 100ul

Orders: order@signalwayantibody.comSupport: tech@signalwayantibody.com

Description

Product Name	SDF-1 Polyclonal Antibody
Host Species	Rabbit
Clonality	Polyclonal
Purification	The antibody was affinity-purified from rabbit antiserum by affinity-chromatography using epitope-specific immunogen.
Applications	WB IHC ELISA
Species Reactivity	Hu Ms Rt
Specificity	SDF-1 Polyclonal Antibody detects endogenous levels of SDF-1 protein.
Immunogen Type	peptide
Immunogen Description	Synthesized peptide derived from the C-terminal region of human SDF-1.
Target Name	SDF-1
Other Names	CXCL12; SDF1; SDF1A; SDF1B; Stromal cell-derived factor 1; SDF-1; hSDF-1; C-X-C motif chemokine 12; Interocrine reduced in hepatomas; IRH; hIRH; Pre-B cell growth-stimulating factor; PBSF
Accession No.	Swiss-Prot: P48061NCBI Gene ID: 6387
SDS-PAGE MW	10kd
Concentration	1mg/ml
Formulation	Liquid in PBS containing 50% glycerol, 0.5% BSA and 0.02% sodium azide.
Storage	Store at -20°C/1 year

Application Details

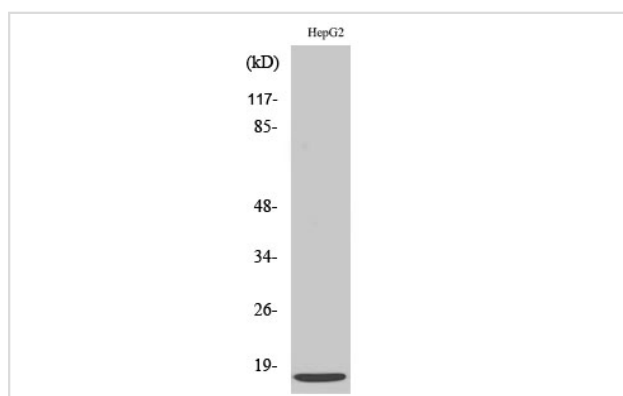
Western Blot: 1/500 - 1/2000.

Immunohistochemistry: 1/100 - 1/300.

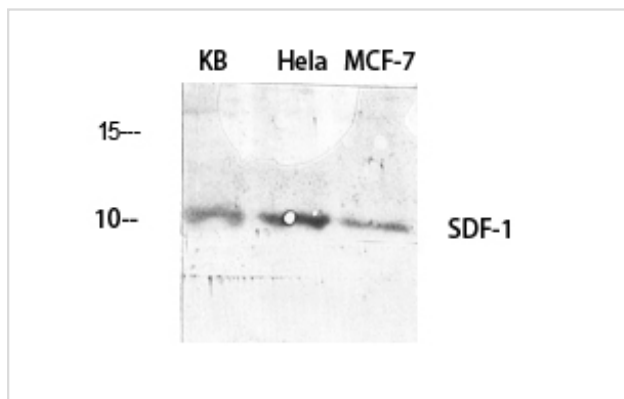
ELISA: 1/40000.

Not yet tested in other applications.

Images



Western Blot analysis of HuvEc cells using SDF-1 Polyclonal Antibody



Western Blot analysis of HELA KB MCF7 cells using SDF-1 Polyclonal Antibody

Published Papers

el at., Travelling ultrasound promotes vasculogenesis of three-dimensional-monocultured human umbilical vein endothelial cells. In Biotechnol Bioeng on 2021 Oct by Chikahiro Imashiro, Tetsuya Azuma,et al..PMID:34110012, , (2021)

[PMID:34110012](#)

el at., Detachment of cell sheets from clinically ubiquitous cell culture vessels by ultrasonic vibration. In Sci Rep on 2020 Jun 11 by Chikahiro Imashiro, Makoto Hirano, et al..PMID:32528073, , (2020)

[PMID:32528073](#)

Note: This product is for in vitro research use only and is not intended for use in humans or animals.