

SIRT2 Polyclonal Antibody

Catalog No: #41437



Package Size: #41437-1 50ul #41437-2 100ul

Orders: order@signalwayantibody.comSupport: tech@signalwayantibody.com

Description

Product Name	SIRT2 Polyclonal Antibody
Host Species	Rabbit
Clonality	Polyclonal
Purification	The antibody was affinity-purified from rabbit antiserum by affinity-chromatography using epitope-specific immunogen.
Applications	WB ELISA
Species Reactivity	Hu Ms Rt
Specificity	SIRT2 Polyclonal Antibody detects endogenous levels of SIRT2 protein.
Immunogen Type	peptide
Immunogen Description	Synthesized peptide derived from the C-terminal region of human SIRT2.
Target Name	SIRT2
Other Names	SIRT2; SIR2L; SIR2L2; NAD-dependent protein deacetylase sirtuin-2; Regulatory protein SIR2 homolog 2; SIR2-like protein 2
Accession No.	Swiss-Prot: Q8IXJ6NCBI Gene ID: 22933
SDS-PAGE MW	43kd
Concentration	1mg/ml
Formulation	Liquid in PBS containing 50% glycerol, 0.5% BSA and 0.02% sodium azide.
Storage	Store at -20°C/1 year

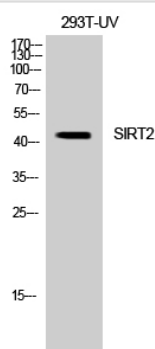
Application Details

Western Blot: 1/500 - 1/2000.

ELISA: 1/5000.

Not yet tested in other applications.

Images



Western Blot analysis of 293 cells using SIRT2 Polyclonal Antibody

Published Papers

et al., DCIR-mediated enhancement of HIV-1 infection requires the ITIM-associated signal transduction pathway. In Blood on 2011 Jun 16 by

Alexandra A Lambert, Frédéric

Barabès, et al..PMID: 21536857, (2011)

[PMID:21536857](#)

et al., trans-Resveratrol Inhibits Hyperglycemia-Induced Inflammation and Connexin Downregulation in Retinal Pigment Epithelial Cells. In J Agric

Food Chem on 2010 Jul 28 by

Jack N Losso, Robert E Truax, et al..PMID: 20578705, (2010)

[PMID:20578705](#)

Note: This product is for in vitro research use only and is not intended for use in humans or animals.