

ZO1 Antibody

Catalog No: #48588



Package Size: #48588-1 50ul #48588-2 100ul

Orders: order@signalwayantibody.comSupport: tech@signalwayantibody.com

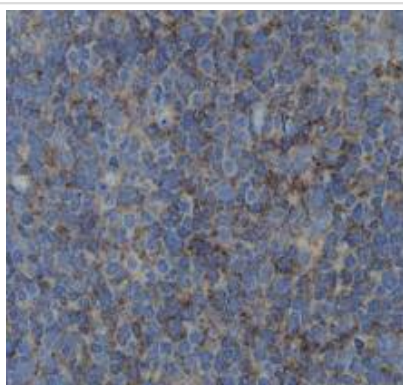
Description

Product Name	ZO1 Antibody
Host Species	Rabbit
Clonality	Polyclonal
Purification	Peptide affinity purified
Applications	ICC, IHC
Species Reactivity	Hu, Ms, Rt
Immunogen Description	peptide
Other Names	Tight junction protein 1 antibody Tight junction protein ZO-1 antibody Tight junction protein ZO1 antibody TJP1 antibody zo-1 antibody Zo1 antibody ZO1_HUMAN antibody Zona occludens 1 antibody Zona occludens 1 protein antibody Zona occludens protein 1 antibody Zonula occludens 1 protein antibody Zonula occludens protein 1 antibody
Accession No.	Swiss-Prot#:Q07157
Formulation	1*TBS (pH7.4), 1%BSA, 40%Glycerol. Preservative: 0.05% Sodium Azide.
Storage	Store at -20°C

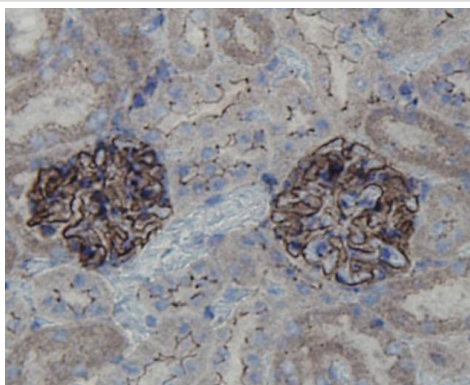
Application Details

IHC: 1:200ICC: 1:200

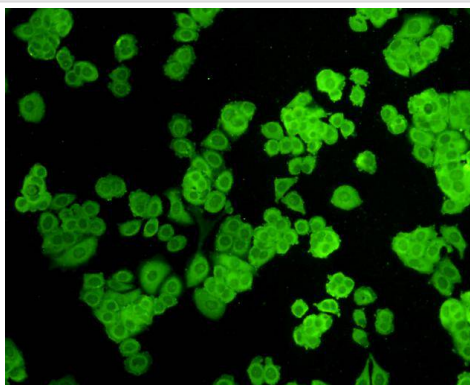
Images



Immunohistochemical analysis of paraffin-embedded human tonsil tissue using anti-ZO1 antibody. Counter stained with hematoxylin.



Immunohistochemical analysis of paraffin-embedded mouse kidney tissue using anti-ZO1 antibody. Counter stained with hematoxylin.



ICC staining ZO1 in MCF-7 cells (green). Cells were fixed in paraformaldehyde, permeabilised with 0.25% Triton X100/PBS.

Background

Tight junction protein ZO-1 is a protein that in humans is encoded by the TJP1 gene. This gene encodes a protein located on a cytoplasmic membrane surface of intercellular tight junctions. The N-terminal may be involved in transducing a signal required for tight junction assembly, while the C-terminal may have specific properties of tight junctions. The alpha domain might be involved in stabilizing junctions. ZO1 plays a role in the regulation of cell migration by targeting CDC42BPB to the leading edge of migrating cells.

References

1. "Evidence for a functional interaction between cingulin and ZO-1 in cultured cells." D'Atri F., Nadalutti F., Citi S. J. Biol. Chem. 277:27757-27764(2002)
2. "Density-enhanced phosphatase 1 regulates phosphorylation of tight junction proteins and enhances barrier function of epithelial cells." Sallee J.L., Burrige K. J. Biol. Chem. 284:14997-15006(2009)
3. "Cdc42-dependent formation of the ZO-1/MRCKbeta complex at the leading edge controls cell migration." Huo L., Wen W., Wang R., Kam C., Xia J., Feng W., Zhang M. EMBO J. 30:665-678(2011)

Published Papers

el at., Bacterial endotoxin-induced maternal inflammation leads to fetal intestinal injury and affects microbial colonization in the neonatal period. In J Matern Fetal Neonatal Med

on 2021 May 31 by Qingmei Huang, Siliang Lu,et al..PMID:34058958, , (2021)

[PMID:34058958](#)

el at., Lipopolysaccharide-Induced Chorioamnionitis Induces Fetal Intestinal Injury and Affects Gut Colonization in Rats

, , (2020)

[PMID:](#)

Note: This product is for in vitro research use only and is not intended for use in humans or animals.