

Caspase-1 Rabbit mAb

Catalog No: #48847



Package Size: #48847-1 50ul #48847-2 100ul

Orders: order@signalwayantibody.com
Support: tech@signalwayantibody.com

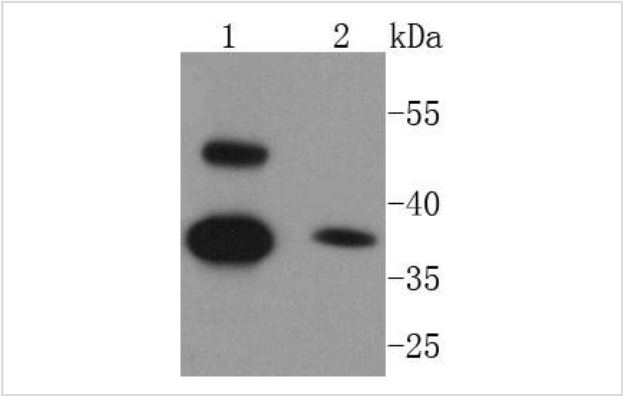
Description

Product Name	Caspase-1 Rabbit mAb
Host Species	Recombinant Rabbit
Clonality	Monoclonal antibody
Clone No.	SU40-07
Purification	ProA affinity purified
Applications	WB, IHC, FC
Species Reactivity	Hu, Ms, Rt
Immunogen Description	recombinant protein
Other Names	CASP-1 antibody CASP1 antibody CASP1_HUMAN antibody Caspase 1 antibody Caspase-1 subunit p10 antibody ICE antibody IL-1 beta-converting enzyme antibody IL-1BC antibody IL1 beta converting enzyme antibody IL1B convertase antibody Interleukin 1 beta convertase antibody Interleukin 1B converting enzyme antibody Interleukin-1 beta convertase antibody Interleukin-1 beta-converting enzyme antibody p45 antibody
Accession No.	Swiss-Prot#:P29466
Calculated MW	45 kDa
Formulation	1*TBS (pH7.4), 1%BSA, 40%Glycerol. Preservative: 0.05% Sodium Azide.
Storage	Store at -20°C

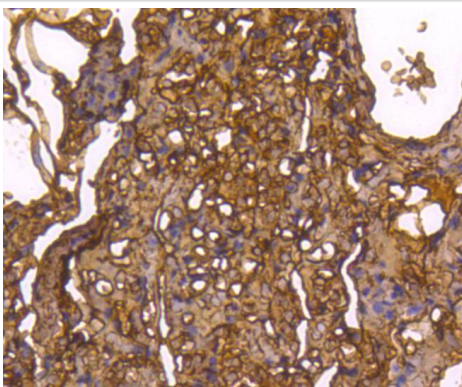
Application Details

WB: 1:1,000-1:2,000 IHC: 1:50-1:200FC: 1:50-1:100

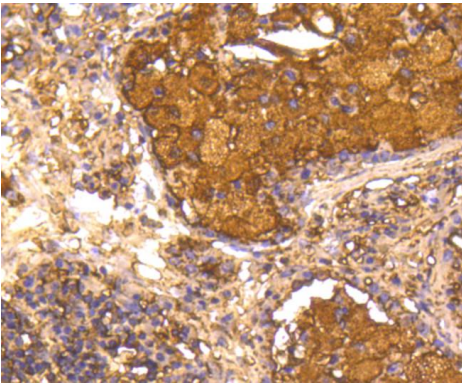
Images



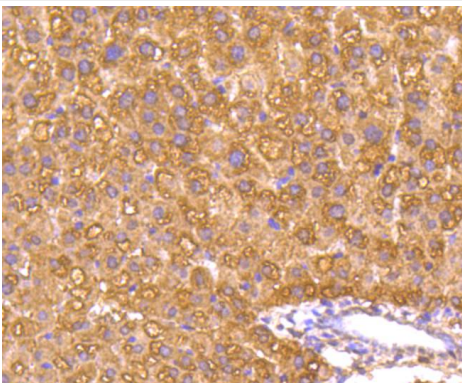
Western blot analysis of Caspase-1 on different lysates using anti-Caspase-1 antibody at 1/1,000 dilution. Positive control:
Lane 1: THP-1 Lane 2: Jurkat



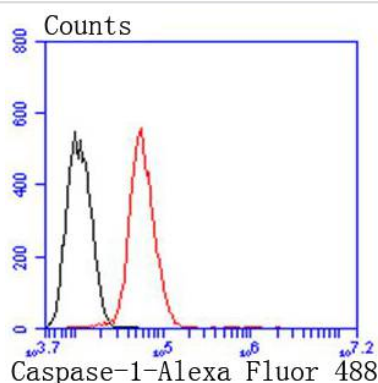
Immunohistochemical analysis of paraffin-embedded human lung tissue using anti-Caspase-1 antibody. Counter stained with hematoxylin.



Immunohistochemical analysis of paraffin-embedded human lung cancer tissue using anti-Caspase-1 antibody. Counter stained with hematoxylin.



Immunohistochemical analysis of paraffin-embedded mouse liver tissue using anti-Caspase-1 antibody. Counter stained with hematoxylin.



Flow cytometric analysis of Hela cells with Caspase-1 antibody at 1/50 dilution (red) compared with an unlabelled control (cells without incubation with primary antibody; black). Alexa Fluor 488-conjugated goat anti rabbit IgG was used as the secondary antibody.

Background

Caspase-1, originally designated ICE (for IL-1 converting enzyme), is a member of the group of caspases with large prodomains. Caspase-1 promotes maturation of interleukin IL-1 β and interleukin 18 (IL-18) by proteolytic cleavage of precursor forms into biologically active pro-inflammatory cytokines. Active caspase-1, a (p20/p10) $_2$ tetramer, is necessary and sufficient for cleavage of precursor IL-1 as well as for induction of apoptosis in some cell lines. The highly conserved family of caspases mediate many of the morphological and biochemical features of apoptosis, including structural dismantling of cell bodies and nuclei, fragmentation of genomic DNA, destruction of regulatory proteins and propagation of other pro-apoptotic molecules. The human Caspase-1 gene maps to chromosome 2q14 and encodes a cytoplasmic protein expressed in liver, heart, skeletal muscle kidney and testis. Caspase-1 has been implicated in inflammation, septic shock, and other situations such as wound healing and the growth of certain

leukemias.

References

1. Zhao J et al. Synthetic Oligodeoxynucleotides Containing Multiple Telemeric TTAGGG Motifs Suppress Inflammasome Activity in Macrophages Subjected to Oxygen and Glucose Deprivation and Reduce Ischemic Brain Injury in Stroke-Prone Spontaneously Hypertensive Rats. PLoS One 10:e0140772 (2015).
2. Zhang X et al. Porcine Mx1 fused to HIV Tat protein transduction domain (PTD) inhibits classical swine fever virus infection in vitro and in vivo. BMC Vet Res 11:264 (2015).

Published Papers

el at., Estrogen prevent atherosclerosis by attenuating endothelial cell pyroptosis via activation of estrogen receptor δ O⁻-mediated autophagy. In J Adv Res on 2020 Aug 24 by

Qinghai Meng, Yu Li,et al..PMID:33364052, , (2021)

[PMID:33364052](#)

Note: This product is for in vitro research use only and is not intended for use in humans or animals.