

VEGF-A Polyclonal Antibody

Catalog No: #41552

Package Size: #41552-1 50ul #41552-2 100ul

Orders: order@signalwayantibody.comSupport: tech@signalwayantibody.com

Description

Product Name	VEGF-A Polyclonal Antibody
Host Species	Rabbit
Clonality	Polyclonal
Purification	The antibody was affinity-purified from rabbit antiserum by affinity-chromatography using epitope-specific immunogen.
Applications	WB ELISA
Species Reactivity	Hu
Specificity	VEGF-A Polyclonal Antibody detects endogenous levels of VEGF-A protein.
Immunogen Type	peptide
Immunogen Description	Synthesized peptide derived from the Internal region of human VEGF-A.
Target Name	VEGF-A
Other Names	VEGFA; VEGF; Vascular endothelial growth factor A; VEGF-A; Vascular permeability factor; VPF
Accession No.	Swiss-Prot: P15692NCBI Gene ID: 7422
SDS-PAGE MW	27kd
Concentration	1mg/ml
Formulation	Liquid in PBS containing 50% glycerol, 0.5% BSA and 0.02% sodium azide.
Storage	Store at -20°C/1 year

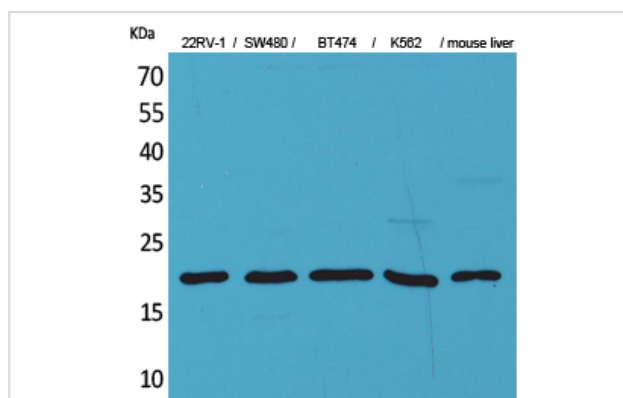
Application Details

Western Blot: 1/500 - 1/2000.

ELISA: 1/20000.

Not yet tested in other applications.

Images



Western Blot analysis of 22RV-1 SW480 BT474 K562 mouse liver cells using VEGF-A Polyclonal Antibody

Published Papers

et al., Chlorin e6-loaded sonosensitive magnetic nanoliposomes conjugated with the magnetic field for enhancing anti-tumor effect of sonodynamic therapy. In Pharm Dev Technol on 2020 Dec by Hai-Mei Zhu, Yi He, et al..PMID:32811263, , (2020)

[PMID:32811263](#)

et al., Identification of biomarkers associated with synovitis in rheumatoid arthritis by bioinformatics analyses. In Biosci Rep on 2020 Sep 30 by Zhaoyan Li, Meng Xu, et al..PMID: 32840301, , (2020)

[PMID:32840301](#)

Note: This product is for in vitro research use only and is not intended for use in humans or animals.