

FKBP12 Rabbit mAb

Catalog No: #49468



Package Size: #49468-1 50ul #49468-2 100ul

Orders: order@signalwayantibody.com
Support: tech@signalwayantibody.com

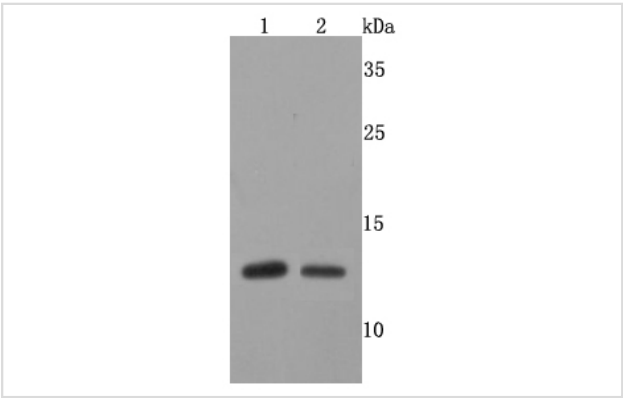
Description

Product Name	FKBP12 Rabbit mAb
Host Species	Recombinant Rabbit
Clonality	Monoclonal antibody
Clone No.	JM11-09
Purification	ProA affinity purified
Applications	WB, ICC/IF
Species Reactivity	Hu, Ms, Rt
Immunogen Description	recombinant protein
Other Names	12 kDa FK506-binding protein antibody 12 kDa FKBP antibody Calstabin 1 antibody FK506 binding protein 1 antibody FK506 binding protein 12 antibody FK506 binding protein 1A (12kD) antibody FK506 binding protein 1A 12kDa antibody FK506 binding protein 1A antibody FK506 binding protein T cell 12 kD antibody FK506 binding protein, T cell, 12 kD antibody FK506 binding protein12 antibody FK506-binding protein 1A antibody FKB1A_HUMAN antibody FKBP 12 antibody FKBP 1A antibody FKBP-12 antibody FKBP-1A antibody FKBP1 antibody FKBP12 antibody FKBP12 Exip3 antibody FKBP12C antibody fkbp1a antibody Immunophilin FKBP12 antibody Peptidyl prolyl cis trans isomerase antibody Peptidyl-prolyl cis-trans isomerase FKBP1A antibody PKC12 antibody PKC12 antibody PPlase antibody PPlase FKBP1A antibody Protein kinase C inhibitor 2 antibody Rotamase antibody
Accession No.	Swiss-Prot#:P62942
Calculated MW	12 kDa
Formulation	1*TBS (pH7.4), 1%BSA, 40%Glycerol. Preservative: 0.05% Sodium Azide.
Storage	Store at -20°C

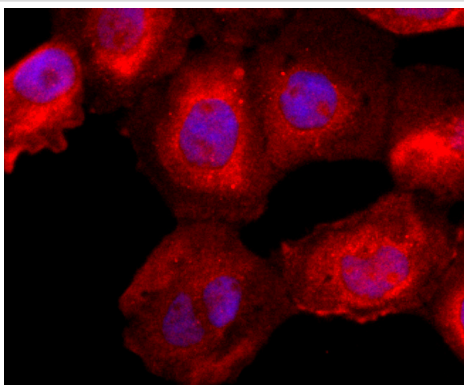
Application Details

WB: 1:500-1:1000ICC: 1:100-1:500

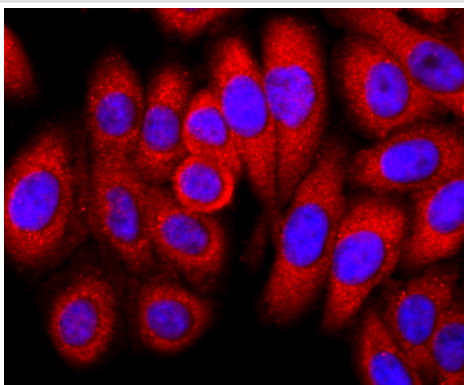
Images



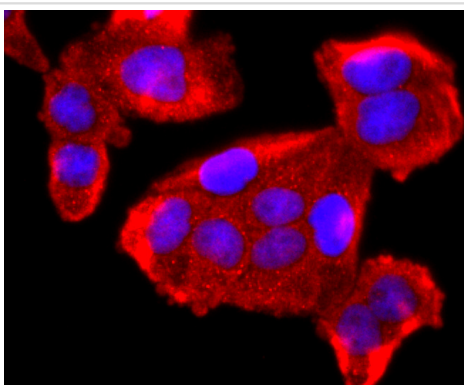
Western blot analysis of FKBP12 on different cells lysates using anti-FKBP12 antibody at 1/500 dilution. Positive control:
Line 1: SH-SY5Y
Line 2: V937



ICC staining FKBP12 in A431 cells (red). The nuclear counter stain is DAPI (blue). Cells were fixed in paraformaldehyde, permeabilised with 0.25% Triton X100/PBS.



ICC staining FKBP12 in HepG2 cells (red). The nuclear counter stain is DAPI (blue). Cells were fixed in paraformaldehyde, permeabilised with 0.25% Triton X100/PBS.



ICC staining FKBP12 in Hela cells (red). The nuclear counter stain is DAPI (blue). Cells were fixed in paraformaldehyde, permeabilised with 0.25% Triton X100/PBS.

Background

Immunophilins are a highly conserved family of cis-trans peptidyl-prolyl isomerases which bind to and mediate the effects of immunosuppressive drugs such as Cyclosporin, FK506 and Rapamycin. FKBP12.6, also known as FK506-binding protein 1B, is a 108 amino acid immunophilin belonging to the FKBP-type PPIase family. Subcellularly localized to the cytoplasm, FKBP12.6 binds to RyR in cardiac muscle sarcoplasmic reticulum and possibly plays a unique physiological role in excitation-contraction coupling in cardiac muscle. FKBP12.6 also catalyzes the cis-trans isomerization of proline imidic peptide bonds in oligopeptides. Ubiquitously expressed, FKBP12.6 is found at highest levels in brain and thymus. FKBP12.6 is expressed as two isoforms produced by alternative splicing.

References

1. Ballister ER et al. Recruitment of Mad1 to metaphase kinetochores is sufficient to reactivate the mitotic checkpoint. *J Cell Biol* 204:901-8 (2014).
2. Buheitel J & Stemmann O Prophase pathway-dependent removal of cohesin from human chromosomes requires opening of the Smc3-Scc1 gate. *EMBO J* 32:666-76 (2013).

Note: This product is for in vitro research use only and is not intended for use in humans or animals.