

PCAF Polyclonal Antibody

Catalog No: #41809

Package Size: #41809-1 50ul #41809-2 100ul

Orders: order@signalwayantibody.comSupport: tech@signalwayantibody.com

Description

Product Name	PCAF Polyclonal Antibody
Host Species	Rabbit
Clonality	Polyclonal
Purification	The antibody was affinity-purified from rabbit antiserum by affinity-chromatography using epitope-specific immunogen.
Applications	WB ELISA
Species Reactivity	Hu Ms
Specificity	PCAF Polyclonal Antibody detects endogenous levels of PCAF protein only when non-acetylation at K428.
Immunogen Type	peptide
Immunogen Description	Synthesized peptide derived from human PCAF around the non-acetylation site of K428.
Target Name	PCAF
Other Names	KAT2B; PCAF; Histone acetyltransferase KAT2B; Histone acetyltransferase PCAF; Histone acetylase PCAF; Lysine acetyltransferase 2B; P300/CBP-associated factor; P/CAF
Accession No.	Swiss-Prot: Q92831NCBI Gene ID: 8850
SDS-PAGE MW	93kd
Concentration	1mg/ml
Formulation	Liquid in PBS containing 50% glycerol, 0.5% BSA and 0.02% sodium azide.
Storage	Store at -20°C/1 year

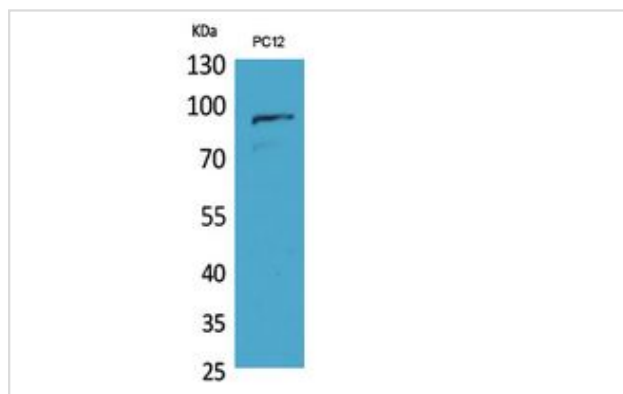
Application Details

Western Blot: 1/500 - 1/2000.

ELISA: 1/20000.

Not yet tested in other applications.

Images



Western Blot analysis of PC12 cells using PCAF Polyclonal Antibody.

Published Papers

el at., Intracellular AGR2 transduces PGE2 stimuli to promote epithelial to mesenchymal transition and metastasis of colorectal cancer. In Cancer Lett on 2021 Oct 10 by Hongyan

Zhang, Jiangyang Chi, et al..PMID:34216690, , (2021)

[PMID:34216690](#)

Note: This product is for in vitro research use only and is not intended for use in humans or animals.