

## Yolk Immunoglobulin Polyclonal Antibody

Catalog No: #42094



Package Size: #42094-1 50ul #42094-2 100ul

Orders: [order@signalwayantibody.com](mailto:order@signalwayantibody.com)Support: [tech@signalwayantibody.com](mailto:tech@signalwayantibody.com)

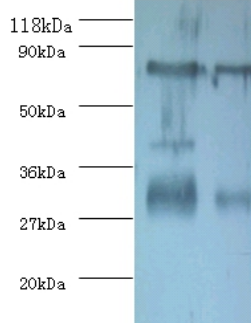
## Description

Product Name	Yolk Immunoglobulin Polyclonal Antibody
Host Species	Rabbit
Clonality	Polyclonal
Purification	Caprylic Acid Ammonium Sulfate Precipitation purified
Applications	WB
Species Reactivity	Chk
Specificity	The antibody detects endogenous level of total Yolk Immunoglobulin polyclonal antibody.
Immunogen Type	protein
Immunogen Description	Chicken Yolk Immunoglobulin
Target Name	Yolk Immunoglobulin
Calculated MW	80kd
Concentration	1.0mg/mL
Formulation	Preservative: 0.03% Proclin 300 Constituents: 50% Glycerol, 0.01M PBS, PH 7.4
Storage	Store at -20°C

## Application Details

Western blotting: □ 1:500 - 1:1000

## Images



All lanes : Chicken Yolk Immunoglobulin Antibody at 2ug/ml + egg yolk

Lane 1 : egg yolk at 1 : 400

Lane 2 : egg yolk at 1 : 100

SecondaryGoat polyclonal to Rabbit IgG at 1/15000 dilution

## Published Papers

el at., Role of S100A9 in the development of neutrophilic inflammation in asthmatics and in a murine model. In Clin Immunol on 2017 Oct by

Tae-Hyeong Lee, Hun Soo Chang, et al..PMID: 28847516

, , (2017)

[PMID:28847516](https://pubmed.ncbi.nlm.nih.gov/28847516/)

---

Note: This product is for in vitro research use only and is not intended for use in humans or animals.