

## Ubiquitin-like protein ISG15 Polyclonal Antibody

Catalog No: #42509

Orders: [order@signalwayantibody.com](mailto:order@signalwayantibody.com)Support: [tech@signalwayantibody.com](mailto:tech@signalwayantibody.com)

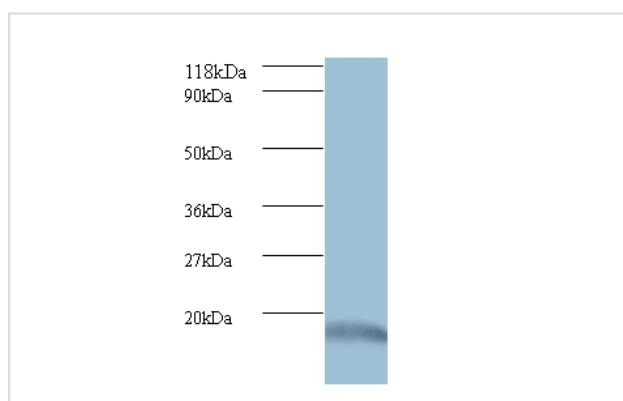
## Description

Product Name	Ubiquitin-like protein ISG15 Polyclonal Antibody
Host Species	Rabbit
Clonality	Polyclonal
Purification	Caprylic Acid Ammonium Sulfate Precipitation purified
Applications	WB IHC
Species Reactivity	Hu
Specificity	The antibody detects endogenous level of total Ubiquitin-like protein ISG15 polyclonal antibody.
Immunogen Type	protein
Immunogen Description	Recombinant human Ubiquitin-like protein ISG15 protein
Target Name	Ubiquitin-like protein ISG15
Other Names	G1P2, UCRP, ISG15, Interferon-induced 15 kDa protein Interferon-induced 17 kDa protein IP17 Ubiquitin cross-reactive protein hUCRP
Accession No.	Swiss-Prot#: P05161
Calculated MW	18kd
Formulation	Preservative: 0.03% Proclin 300 Constituents: 50% Glycerol, 0.01M PBS, PH 7.4
Storage	Store at -20°C

## Application Details

Western blotting: □ 1:500 - 1:1000

## Images



All lanes : Ubiquitin-like protein ISG15 antibody at  
2ug/ml+293T whole cell lysate  
SecondaryGoat polyclonal to Rabbit IgG at 1/15000 dilution  
Predicted band size : 18 kDa  
Observed band size: 18 kDa

## Background

Ubiquitin-like protein that is conjugated to intracellular target proteins after IFN-alpha or IFN-beta stimulation. Its enzymatic pathway is partially distinct from that of ubiquitin, differing in substrate specificity and interaction with ligating enzymes. ISG15 conjugation pathway uses a dedicated E1 enzyme, but seems to converge with the Ub conjugation pathway at the level of a specific E2 enzyme. Targets include STAT1, SERPINA3G/SPI2A, JAK1, MAPK3/ERK1, PLCG1, EIF2AK2/PKR, MX1/MxA, and RIG-1. Deconjugated by USP18/UBP43. Shows specific chemotactic activity towards neutrophils and activates them to induce release of eosinophil chemotactic factors. May serve as a trans-acting binding factor directing the association

of ligated target proteins to intermediate filaments. May also be involved in autocrine, paracrine and endocrine mechanisms, as in cell-to-cell signaling, possibly partly by inducing IFN-gamma secretion by monocytes and macrophages. Seems to display antiviral activity during viral infections. Ref.12 Ref.13 Ref.14 Ref.15 Ref.20 Ref.21In response to IFN-tau secreted by the conceptus, may ligate to and regulate proteins involved in the release of prostaglandin F2-alpha (PGF), and thus prevent lysis of the corpus luteum and maintain the pregnancy

## References

[1] "Molecular characterization of the interferon-induced 15-kDa protein. Molecular cloning and nucleotide and amino acid sequence."Blomstrom D.C., Fahey D., Kutny R., Korant B.D., Knight E. Jr.J. Biol. Chem. 261:8811-8816(1986) [2] "Interferon-induced

## Published Papers

el at., Effects of hepatitis E virus infection on interferon production via ISG15.In World J Gastroenterol. On 2018 May 28 by Wang M, Huang Y et al..PMID:29853735, , (2018)

[PMID:29853735](#)

Note: This product is for in vitro research use only and is not intended for use in humans or animals.