

LTA4H Antibody

Catalog No: #42720



Package Size: #42720-1 50ul #42720-2 100ul

Orders: order@signalwayantibody.com

Support: tech@signalwayantibody.com

Description

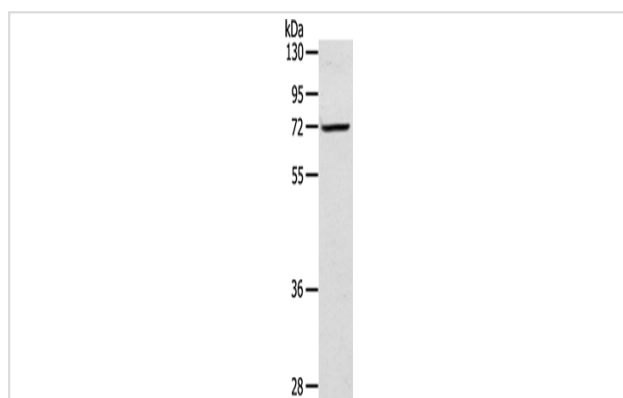
Product Name	LTA4H Antibody
Host Species	Rabbit
Clonality	Polyclonal
Purification	Antigen affinity purification.
Applications	WB
Species Reactivity	Hu Ms
Specificity	The antibody detects endogenous levels of total LTA4H protein.
Immunogen Type	protein
Immunogen Description	Fusion protein of human LTA4H
Target Name	LTA4H
Other Names	Leukotriene A-4 hydrolase; leukotriene A4 hydrolase; LKHA4; LTA-4 hydrolase; LTA4; LTA4H
Accession No.	Swiss-Prot#: P09960 Gene ID: 4048
Calculated MW	69kd
Concentration	1mg/ml
Formulation	Rabbit IgG in pH7.4 PBS, 0.05% NaN ₃ , 40% Glycerol.
Storage	Store at -20°C

Application Details

Western blotting: 1:500-1:2000

Immunohistochemistry: 1:10-1:50

Images



Gel: 8%SDS-PAGE

Lysate: 40 µg

Lane: TM4 cells

Primary antibody: 1/300 dilution

Secondary antibody: Goat anti rabbit IgG at 1/8000 dilution

Exposure time: 20 seconds

Background

LTA4H (Leukotriene A4-hydrolase) is a Zn²⁺-containing enzyme with both epoxide hydrolase and aminopeptidase activity. As an epoxide hydrolase, LTA4H catalyzes the hydration of LTA4 to leukotriene B4 (LTB4, 5S,12R-dihydroxy-6,14-cis-8,10-trans-eicosatetraenoic acid), a potent lipid

chemoattractant that influences inflammation, immune responses, and host defense against infection. As an aminopeptidase, LTA4H catalyzes the cleavage of amides of para-nitroaniline. The human LTA4H gene encodes a 610 amino acid protein.

Published Papers

el at., CCR9 Promotes Migration and Invasion of Lung Adenocarcinoma Cancer Stem Cells.In Int J Med Sci on 2020 Mar 26; by Lu L, Du H, et al..PMID: 32308544, , (2020)

[PMID:32308544](#)

Note: This product is for in vitro research use only and is not intended for use in humans or animals.