

YPEL2 Antibody

Catalog No: #43588

Package Size: #43588-1 50ul #43588-2 100ul

Orders: order@signalwayantibody.comSupport: tech@signalwayantibody.com

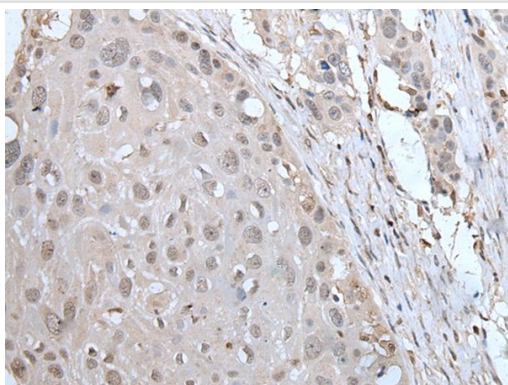
Description

Product Name	YPEL2 Antibody
Host Species	Rabbit
Clonality	Polyclonal
Purification	Antigen affinity purification
Applications	IHC
Species Reactivity	Hu Ms
Specificity	The antibody detects endogenous levels of total YPEL2 protein.
Immunogen Type	protein
Immunogen Description	Full length fusion protein
Target Name	YPEL2
Other Names	FKSG4
Accession No.	Swiss-Prot#: Q96QA6NCBI Gene ID: 388403
Concentration	0.5mg/ml
Formulation	Rabbit IgG in pH7.4 PBS, 0.05% NaN ₃ , 40% Glycerol.
Storage	Store at -20°C

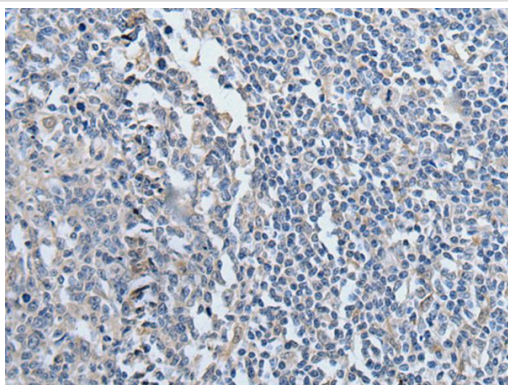
Application Details

Immunohistochemistry: 1: 20-100

Images



The image on the left is immunohistochemistry of paraffin-embedded Human esophagus cancer tissue using YPEL2 Antibody at dilution 1/30, on the right is treated with fusion protein. (Original magnification: x200)



The image on the left is immunohistochemistry of paraffin-embedded Human tonsil tissue using YPEL2 Antibody at dilution 1/30, on the right is treated with fusion protein. (Original magnification: x200)

Background

YPEL2 (yippee-like 2) belongs to a family of five yippee-like proteins, all of which localize to the centrosome or mitotic spindle and are widely expressed in both adult and fetal tissue. This localization plus the fact that the family of human YPEL proteins share a high degree of sequence homology across species suggests that these proteins may have a conserved function involved in cell division. YPEL2 might be an important factor during the development and malignant transformation of tissues, most notably pancreatic and breast tumors.

Note: This product is for in vitro research use only and is not intended for use in humans or animals.