

## ETFB Antibody

Catalog No: #43776

Package Size: #43776-1 50ul #43776-2 100ul

Orders: [order@signalwayantibody.com](mailto:order@signalwayantibody.com)Support: [tech@signalwayantibody.com](mailto:tech@signalwayantibody.com)

## Description

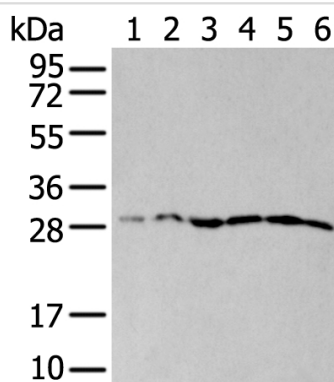
Product Name	ETFB Antibody
Host Species	Rabbit
Clonality	Polyclonal
Purification	Antigen affinity purification
Applications	IHC WB
Species Reactivity	Hu Ms
Specificity	The antibody detects endogenous levels of total ETFB protein.
Immunogen Type	peptide
Immunogen Description	Synthetic peptide of human ETFB
Target Name	ETFB
Other Names	MADD; FP585
Accession No.	Swiss-Prot#: P38117NCBI Gene ID: 2109
Calculated MW	28kd
Concentration	0.4mg/ml
Formulation	Rabbit IgG in pH7.4 PBS, 0.05% NaN <sub>3</sub> , 40% Glycerol.
Storage	Store at -20°C

## Application Details

Western blotting: 1:200-1000

Immunohistochemistry: 1: 20-100

## Images



Gel: 12%SDS-PAGE

Lysate: 40 µg, Lane 1-6: HEPG2 and Hela cell

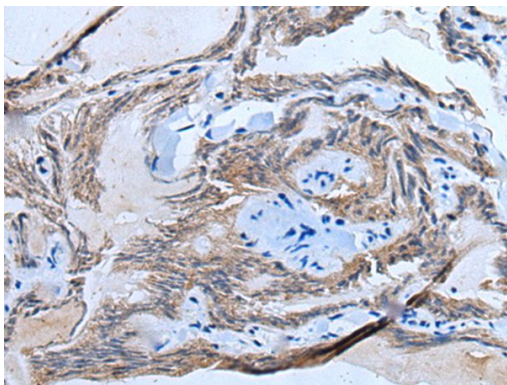
lysatesB&amp;B~Human heart tissueB&amp;B~mouse brain

tissueB&B~mouse skeletal muscle tissueB&B~human liver  
tissue lysates,

Primary antibody:ETFb antibody at dilution 1/200,

Secondary antibody: Goat anti rabbit IgG at 1/8000 dilution,

Exposure time: 1 minute



The image on the left is immunohistochemistry of paraffin-embedded Human thyroid cancer tissue using ETFB Antibody at dilution 1/20, on the right is treated with synthetic peptide. (Original magnification: x200)

## Background

This gene encodes electron-transfer-flavoprotein, beta polypeptide, which shuttles electrons between primary flavoprotein dehydrogenases involved in mitochondrial fatty acid and amino acid catabolism and the membrane-bound electron transfer flavoprotein ubiquinone oxidoreductase. The gene deficiencies have been implicated in type II glutaricaciduria. Alternatively spliced transcript variants have been found for this gene.

## Published Papers

el at., Mitochondrial FAD shortage in SLC25A32 deficiency affects folate-mediated one-carbon metabolism. In Cell Mol Life Sci on 2022 Jun 21 by Min-Zhi Peng, Yong-Xian Shao, et al..PMID:35727412, , (2022)

[PMID:35727412](#)

Note: This product is for in vitro research use only and is not intended for use in humans or animals.