

YPEL4 Antibody

Catalog No: #43796



Package Size: #43796-1 50ul #43796-2 100ul

Orders: order@signalwayantibody.comSupport: tech@signalwayantibody.com

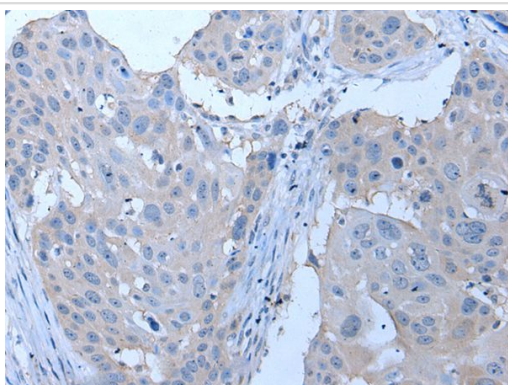
Description

Product Name	YPEL4 Antibody
Host Species	Rabbit
Clonality	Polyclonal
Purification	Antigen affinity purification
Applications	IHC
Species Reactivity	Hu Ms Rt
Specificity	The antibody detects endogenous levels of total YPEL4 protein.
Immunogen Type	peptide
Immunogen Description	Synthetic peptide of human YPEL4
Target Name	YPEL4
Accession No.	Swiss-Prot#: Q96NS1NCBI Gene ID: 219539
Concentration	0.8mg/ml
Formulation	Rabbit IgG in pH7.4 PBS, 0.05% NaN ₃ , 40% Glycerol.
Storage	Store at -20°C

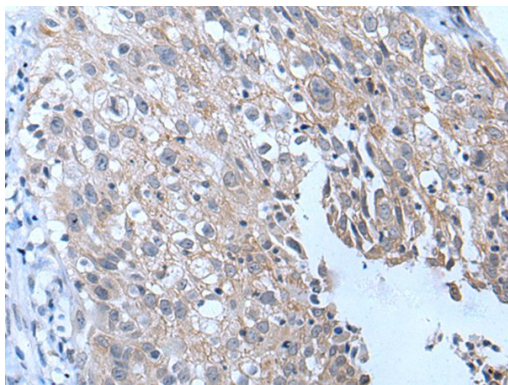
Application Details

Immunohistochemistry: 1: 20-100

Images



The image on the left is immunohistochemistry of paraffin-embedded Human esophagus cancer tissue using YPEL4 Antibody at dilution 1/30, on the right is treated with synthetic peptide. (Original magnification: x200)



The image on the left is immunohistochemistry of paraffin-embedded Human lung cancer tissue using YPEL4 Antibody at dilution 1/30, on the right is treated with synthetic peptide. (Original magnification: x200)

Background

YPEL4 (yippee-like 4) belongs to a family of five yippee-like proteins, all of which localize to the centrosome or mitotic spindle and are widely expressed in both adult and fetal tissue. This localization plus the fact that the family of human YPEL proteins share a high degree of sequence homology across species suggests that these proteins may have a conserved function involved in cell division. YPEL4 is ubiquitously expressed in adult tissues and has been shown to associate with the major vault protein (MVP). It has been suggested that MVP can inhibit YPEL4's ability to activate Elk-1 in the MAPK signaling pathway.

Note: This product is for in vitro research use only and is not intended for use in humans or animals.