

YPEL5 Antibody

Catalog No: #43797



Package Size: #43797-1 50ul #43797-2 100ul

Orders: order@signalwayantibody.comSupport: tech@signalwayantibody.com

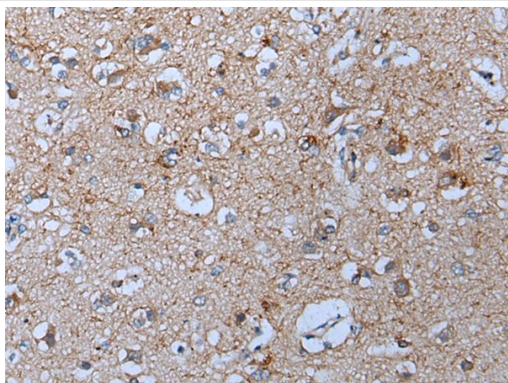
Description

Product Name	YPEL5 Antibody
Host Species	Rabbit
Clonality	Polyclonal
Purification	Antigen affinity purification
Applications	IHC
Species Reactivity	Hu Ms
Specificity	The antibody detects endogenous levels of total YPEL5 protein.
Immunogen Type	peptide
Immunogen Description	Synthetic peptide of human YPEL5
Target Name	YPEL5
Other Names	CGI-127
Accession No.	Swiss-Prot#: P62699NCBI Gene ID: 51646
Concentration	1.5mg/ml
Formulation	Rabbit IgG in pH7.4 PBS, 0.05% NaN ₃ , 40% Glycerol.
Storage	Store at -20°C

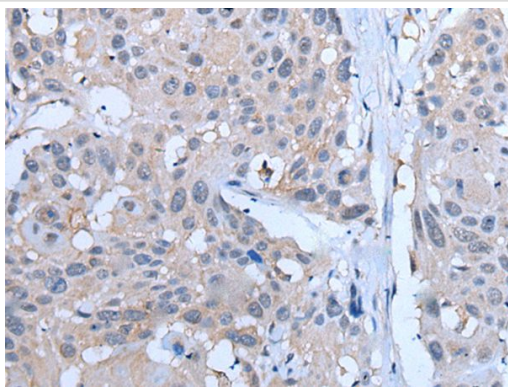
Application Details

Immunohistochemistry: 1: 100-250

Images



The image on the left is immunohistochemistry of paraffin-embedded Human brain tissue using YPEL5 Antibody at dilution 1/100, on the right is treated with synthetic peptide. (Original magnification: x200)



The image on the left is immunohistochemistry of paraffin-embedded Human esophagus cancer tissue using YPEL5 Antibody at dilution 1/100, on the right is treated with synthetic peptide. (Original magnification: x200)

Background

YPEL5 (yippee-like 5), also known as CGI-127, is a 121 amino acid protein that may be involved in cell division-related function. During cell cycle progression, YPEL5 localizes to multiple subcellular regions. At interphase of mitosis, YPEL5 localizes to the nucleus and centrosome, then changes its location sequentially to the spindle poles, mitotic spindle and spindle midzone, and finally it is transferred to the midbody at cytokinesis. The function of YPEL5 during cell division is not yet fully understood.

Note: This product is for in vitro research use only and is not intended for use in humans or animals.