

## Src(Phospho-Tyr529) Antibody

Catalog No: #11153

Package Size: #11153-1 50ul #11153-2 100ul

Orders: [order@signalwayantibody.com](mailto:order@signalwayantibody.com)Support: [tech@signalwayantibody.com](mailto:tech@signalwayantibody.com)

## Description

Product Name	Src(Phospho-Tyr529) Antibody
Host Species	Rabbit
Clonality	Polyclonal
Purification	Antibodies were produced by immunizing rabbits with synthetic phosphopeptide and KLH conjugates. Antibodies were purified by affinity-chromatography using epitope-specific phosphopeptide. Non-phospho specific antibodies were removed by chromatography using non-phosphopeptide.
Applications	WB IHC IF
Species Reactivity	Hu Ms Rt
Specificity	The antibody detects endogenous level of Src only when phosphorylated at tyrosine 529.
Immunogen Type	Peptide-KLH
Immunogen Description	Peptide sequence around phosphorylation site of tyrosine 529 (P-Q-Y(p)-Q-P) derived from Human Src.
Target Name	Src
Modification	Phospho
Other Names	C-SRC; SRC1;
Accession No.	Swiss-Prot: P12931NCBI Protein: NP_005408.1
Concentration	1.0mg/ml
Formulation	Supplied at 1.0mg/mL in phosphate buffered saline (without Mg <sup>2+</sup> and Ca <sup>2+</sup> ), pH 7.4, 150mM NaCl, 0.02% sodium azide and 50% glycerol.
Storage	Store at -20°C for long term preservation (recommended). Store at 4°C for short term use.

## Application Details

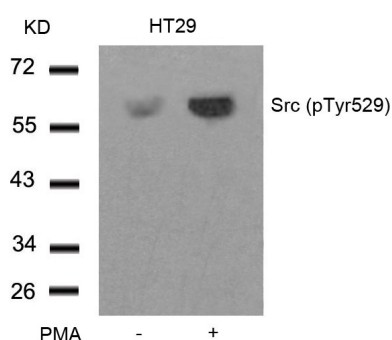
Predicted MW: 60kd

Western blotting: 1:500~1:1000

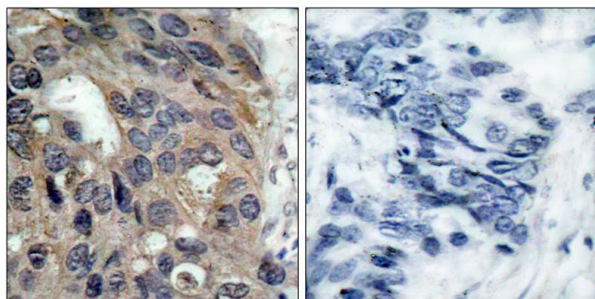
Immunohistochemistry: 1:50~1:100

Immunofluorescence: 1:100~1:200

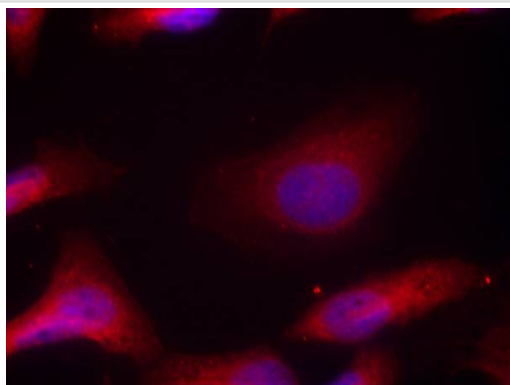
## Images



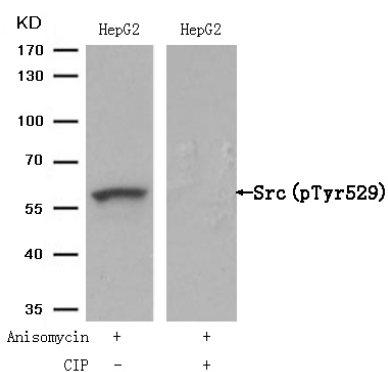
Western blot analysis of extracts from HT29 cells untreated or treated with PMA using Src(Phospho-Tyr529) Antibody #11153.



Immunohistochemical analysis of paraffin-embedded human breast carcinoma tissue using Src(Phospho-Tyr529) Antibody #11153(left) or the same antibody preincubated with blocking peptide(right).



Immunofluorescence staining of methanol-fixed HeLa cells using Src(Phospho-Tyr529) Antibody #11153.



Western blot analysis of extracts from HepG2 cells, treated with Anisomycin or calf intestinal phosphatase (CIP), using Src (Phospho-Tyr529) Antibody #11153.

## Background

proto-oncogenic cytoplasmic tyrosine kinase of the SRC family. Highly expressed in certain fully differentiated cells such as neurons, platelets and macrophages. Phosphorylation of an activation loop tyrosine activates the enzyme; phosphorylation of a tyrosine in the C-terminus by Csk inhibits the enzyme.

Pyper J.M., (1985) Mol. Cell. Biol. 5:831-838

Pyper J.M.(1990) Mol. Cell. Biol. 10:2035-2040

Xu W., (1997).Nature 385:595-602

Benes C.H., (2005) Cell 121:271-280

## Published Papers

el at., Identification of Demethylcisterol A 3 as a Selective Inhibitor of Protein Tyrosine Phosphatase Shp2.In Eur J Pharmacol on 2017 Jan 15 by Chuan Chen , Fan Liang,et al..PMID: 27939989 , (2017)

[PMID:27939989](#)

el at., Discovery of a novel inhibitor of the protein tyrosine phosphatase Shp2.In Sci Rep on 2015 Dec 2 by Chuan Chen , Mengmeng Cao et al..PMID: 26626996 , , (2015)

[PMID:26626996](#)

et al., Neuronal deletion of GSK3 $\beta$  increases microtubule speed in the growth cone and enhances axon regeneration via CRMP-2 and independently of MAP1B and CLASP2. In MC Biol on 2014 Jun 12 by M $\theta$ rcia A Liz, Fernando M Mar et al.. PMID: 24923837, , (2014)

[PMID:24923837](#)

Yanhua Zheng, Yan Xia, Xiang Gao et al., FAK Phosphorylation by ERK Primes Ras-Induced Tyrosine Dephosphorylation of FAK Mediated by PIN1 and PTP-PEST., Molecular Cell, 35(1):11–25(2009)

[PMID:19595712](#)

et al., FAK phosphorylation by ERK primes ras-induced tyrosine dephosphorylation of FAK mediated by PIN1 and PTP-PEST. In Mol Cell on 2009 Jul 10 by Yanhua Zheng, Yan Xia, et al.. PMID:19595712, , (2009)

[PMID:19595712](#)

---

Note: This product is for in vitro research use only and is not intended for use in humans or animals.