

His-Tag Monoclonal Antibody(4E6)

Catalog No: #44006

Package Size: #44006-1 50ul #44006-2 100ul

Orders: order@signalwayantibody.comSupport: tech@signalwayantibody.com

Description

Product Name	His-Tag Monoclonal Antibody(4E6)
Host Species	Mouse
Clonality	Monoclonal
Clone No.	4E6
Isotype	IgG1
Applications	WB IP IF
Specificity	The antibody detects C-terminal, internal, and N-terminal His-tag fusion proteins.
Immunogen Type	Peptide
Immunogen Description	Synthetic peptide:HHHHHH conjugated to KLH.
Target Name	His-Tag
Concentration	1mg/ml
Formulation	Liquid in PBS containing 50% glycerol, 0.5% BSA and 0.02% sodium azide.
Storage	Store at -20°C/1 year

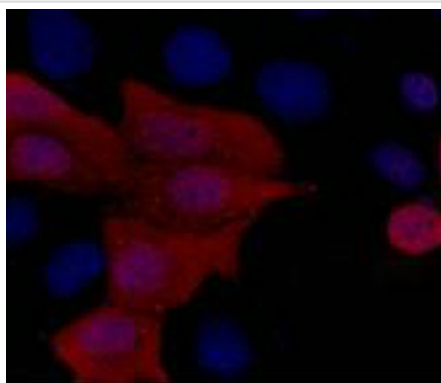
Application Details

Western blotting: 1:3000

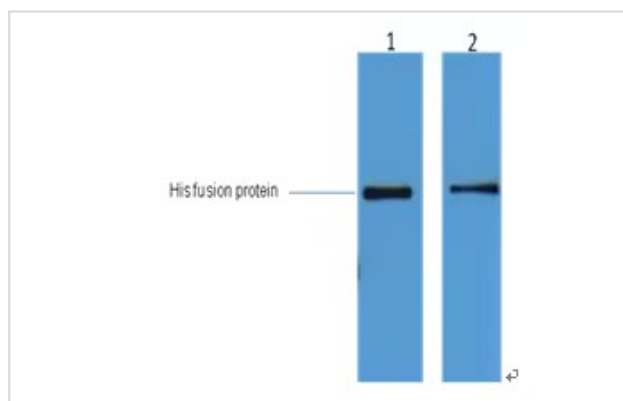
Immunoprecipitation: 1:200

Immunofluorescence: 1:1000

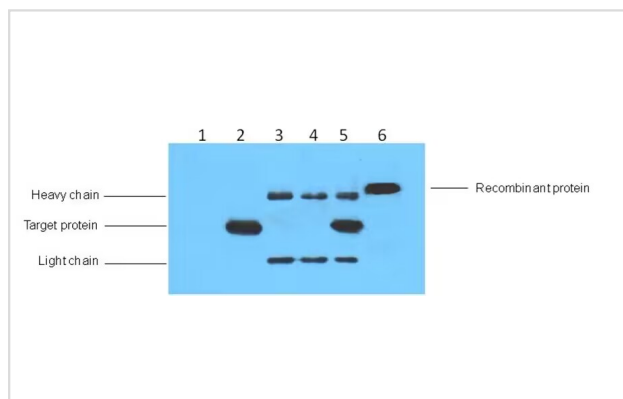
Images



IF analysis of 293 cells transfected with a His-tag protein, 1:1000 dilution (blue DAPI, red anti-His)



2ug His fusion protein+ Primary antibody dilution at 1) 1:5000
2) 1:10000



IP antibody use: 5ug His Mouse IgG1 per ml Lysate, WB 1:
3000 1) untransfected 293 cell lysate 2) transfected 293 cell
lysate with His-tag fusion protein 3) IP (untransfected
293+anti-His mAb+ Protein G agarose) 4) IP (transfected
293+ normal Mouse IgG

Note: This product is for in vitro research use only and is not intended for use in humans or animals.