

Collagen II Mouse Monoclonal Antibody(7F9)

Catalog No: #44278

Package Size: #44278-1 50ul #44278-2 100ul

Orders: order@signalwayantibody.comSupport: tech@signalwayantibody.com

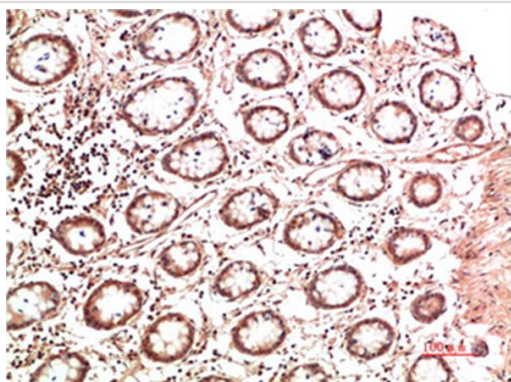
Description

Product Name	Collagen II Mouse Monoclonal Antibody(7F9)
Host Species	Mouse
Clonality	Monoclonal
Clone No.	7F9
Isotype	IgG1
Applications	IHC
Species Reactivity	Hu Ms Rt
Specificity	The antibody detects endogenous Collagen II protein
Immunogen Type	Peptide
Immunogen Description	Synthetic Peptide of Collagen II
Target Name	Collagen II
Other Names	Collagen alpha-1(II) chain (Alpha-1 type II collagen) [Cleaved into: Collagen alpha-1(II) chain; Chondrocalcin]
Calculated MW	142kd
Concentration	1mg/ml
Formulation	Liquid in PBS containing 50% glycerol, 0.5% BSA and 0.02% sodium azide.
Storage	Store at -20°C/1 year

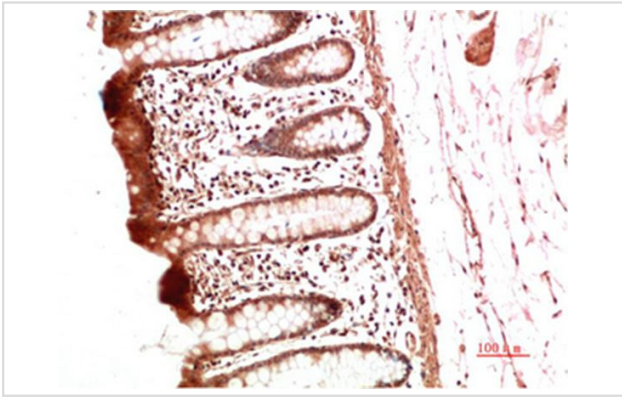
Application Details

Immunohistochemistry: 1:50-1:200

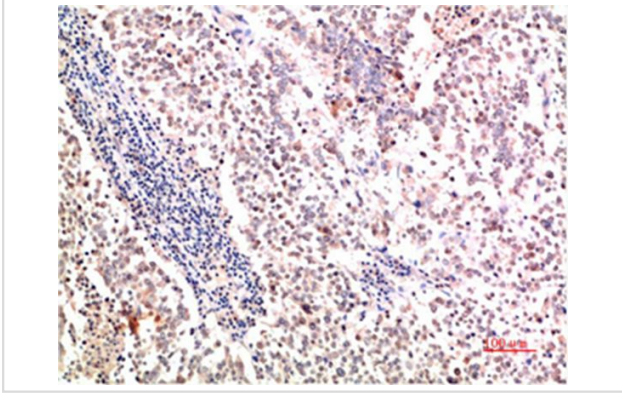
Images



Immunohistochemical analysis of paraffin-embedded Human Colon Carcinoma Tissue using Collagen II Mouse mAb diluted at 1:500



Immunohistochemical analysis of paraffin-embedded Human Colon Carcinoma Tissue using Collagen II Mouse mAb diluted at 1:500



Immunohistochemical analysis of paraffin-embedded Human Lung Carcinoma Tissue using Collagen II Mouse mAb diluted at 1:500

Note: This product is for in vitro research use only and is not intended for use in humans or animals.