

# FER (Phospho-Tyr714) Antibody

Catalog No: #12502



Package Size: #12502-1 50ul #12502-2 100ul

Orders: [order@signalwayantibody.com](mailto:order@signalwayantibody.com)  
Support: [tech@signalwayantibody.com](mailto:tech@signalwayantibody.com)

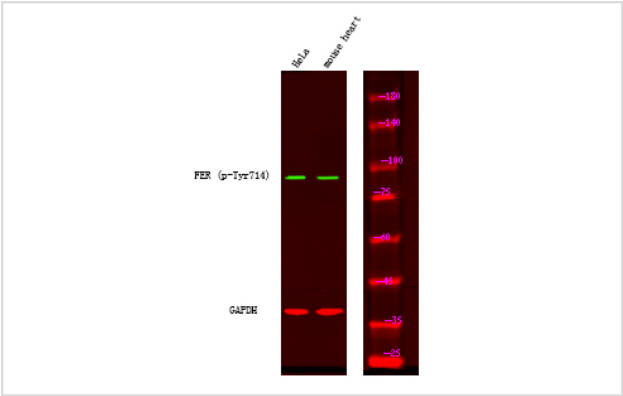
## Description

Product Name	FER (Phospho-Tyr714) Antibody
Host Species	Rabbit
Clonality	Polyclonal
Purification	Antibodies were produced by immunizing rabbits with synthetic phosphopeptide and KLH conjugates. Antibodies were purified by affinity-chromatography using epitope-specific phosphopeptide. Non-phospho specific antibodies were removed by chromatography using non-phosphopeptide.
Applications	WB
Species Reactivity	Hu Ms Rt
Specificity	FER (Phospho-Tyr714) Antibody detects endogenous levels of FER only when phosphorylated at Tyr714
Immunogen Type	Peptide
Immunogen Description	A synthesized peptide derived from human FER (Phospho-Tyr714)
Target Name	FER
Modification	Phospho
Other Names	FER, c-fer, Fer kinase, p94-Fer, Phosphoprotein NCP94, PPP1R74, Proto-oncogene c-Fer, TYK3, Tyrosine-protein kinase Fer, p94fer, Tyrosine kinase 3, FerT
Accession No.	Swiss-Prot#: P16591NCBI Gene ID: 2241
Target Species	human
Calculated MW	85kd
Concentration	1.0mg/ml
Formulation	Rabbit IgG in phosphate buffered saline (without Mg2+ and Ca2+), pH 7.4, 150mM NaCl, 0.02% sodium azide and 50% glycerol.
Storage	Store at -20°C

## Application Details

Western blotting: 1:1000

## Images



Western Blot analysis of lysates of A431 cell and mouse heart, using primary antibody at 1:1000 dilution.

---

Note: This product is for in vitro research use only and is not intended for use in humans or animals.